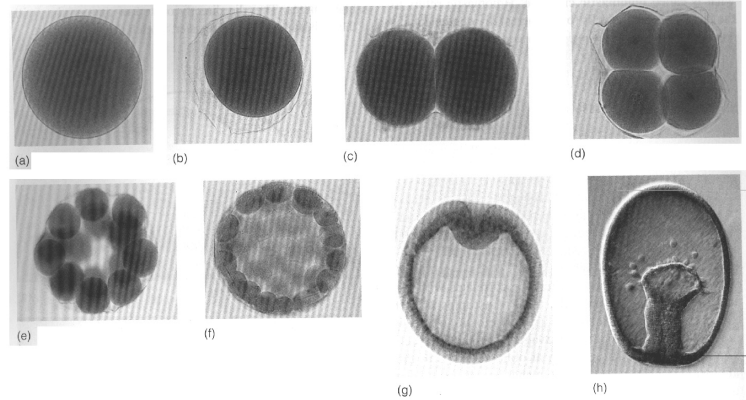


Figuras del desarrollo embrionario.

Figure 12.1 Stages in echinoderm (sea star) development: (a) unfertilized egg; (b) zygote surrounded by fertilization membrane; (c) 2-cell stage (blastomeres); (d) 4-cell stage; (e) morula; (f) blastula; (g) early gastrula; (h) late gastrula.



Stages of egg formation in hen. Albumin (egg white) and shell develop as egg cell passes through oviduct. Embryo is in gastrula stage when egg is laid.

