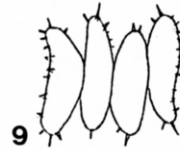
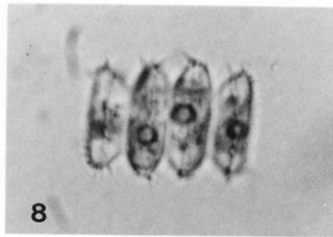
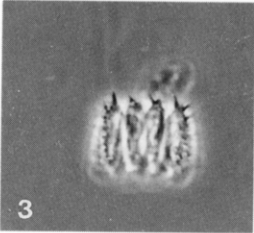
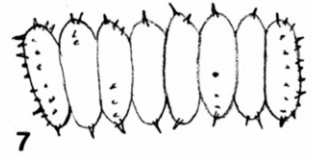
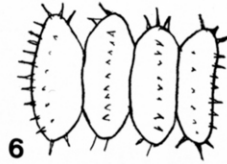
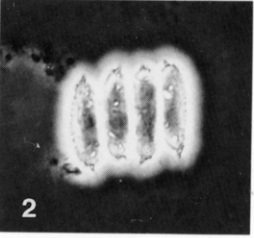
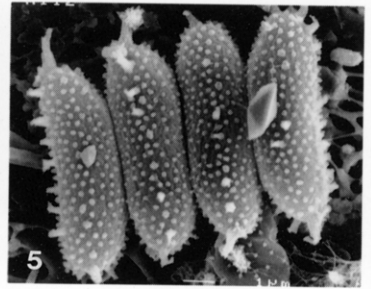
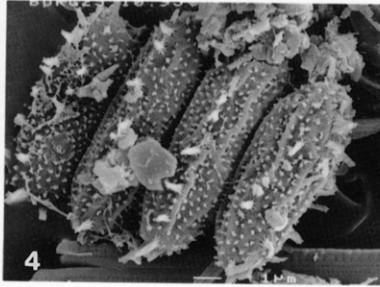
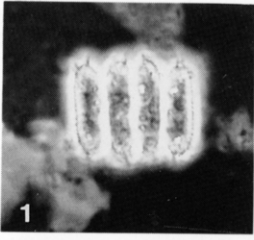


Genus *Scenedesmus* セネデスムス属

Code No. 11・03・08

*Scenedesmus serratus* (CORDA) BOHLIN. var. *serratus*

Bih. Kongl. Svenska Vetensk.-Akad. Handl. 27, 3(4): 44, 1901; CORDA, Almanach de Carlsbad 9: 213-244, 1839.

藻体は2個, 4個, 稀に8個の細胞よりなる浮遊性の定数群体で, 周りは粘質鞘に包まれている。細胞は長い円筒形で, 両端は円頭形。側壁の80%くらいの部分で相互に接して1列に並んでいる。外側細胞はやや湾曲し, 側縁に短い刺状突起列と両端に刺状突起がある。内側細胞は側縁にも短い突起列がある。細胞壁は平滑であるが, 電顕では密に並んだ疣状突起がある。細胞は径 $1.7\sim 6.6\mu\text{m}$ , 長さ $6.4\sim 17.5\mu\text{m}$ 。細胞の側縁の短い刺状突起は光顕では見えないものもあるが, その場合はこの種は *Scenedesmus arthrodesmiformis* SCHRÖDER と区別することは難しい。(E. ヘゲワルド・S. S. アン)

*Scenedesmus serratus* (CORDA) BOHLIN. var. *serratus*

Coenobia of 2, 4, rarely 8 cells; cells oblong cylindrical with rounded ends, contacting with about 80% of lateral walls, outer cells slightly convex, with short spines on cell pole and in two lateral rows, central cells on one side with one row of short spines, often not visible under the light microscope; cell walls smooth under the light microscope, with warts under the electron microscope; coenobia surrounded by mucilage; release of daughter coenobia by a rupture of the mother cell wall; cells  $1.7\sim 6.6\mu\text{m}$  broad,  $6.4\sim 17.5\mu\text{m}$  long. When the short spines on the lateral walls are not visible, the taxon cannot be distinguished from *Scenedesmus arthrodesmiformis* SCHRÖDER. (Figs. 1~3, 6~9,  $\times 1000$ . 4~5,  $\times 3000$ . Loc. 1~2, pond in Oberzier, Germany. 5, 9, isolate from Naju, Korea. 3~4, 6, natural sample and isolate from Burgau, Germany. 7, isolate from Lake Varosligeti-tó, Hungary. 8, Yuksa pond, Korea.) (Eberhard HEGEWALD & Seon Sook AN)