

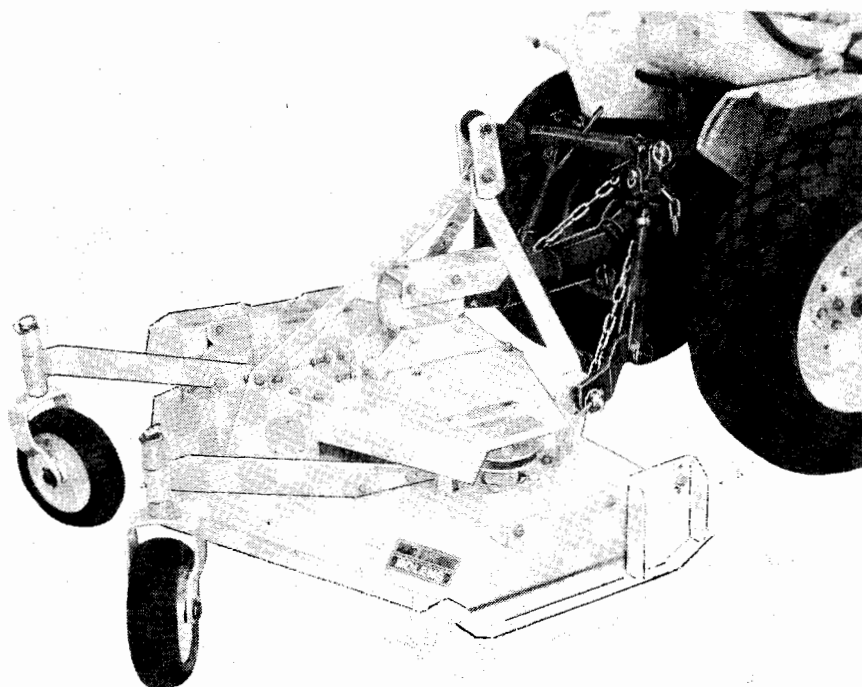
FMC

Bolens[®]

DIESEL TRACTORS

**Mower
Attachment
48 Inch**

Model 1348



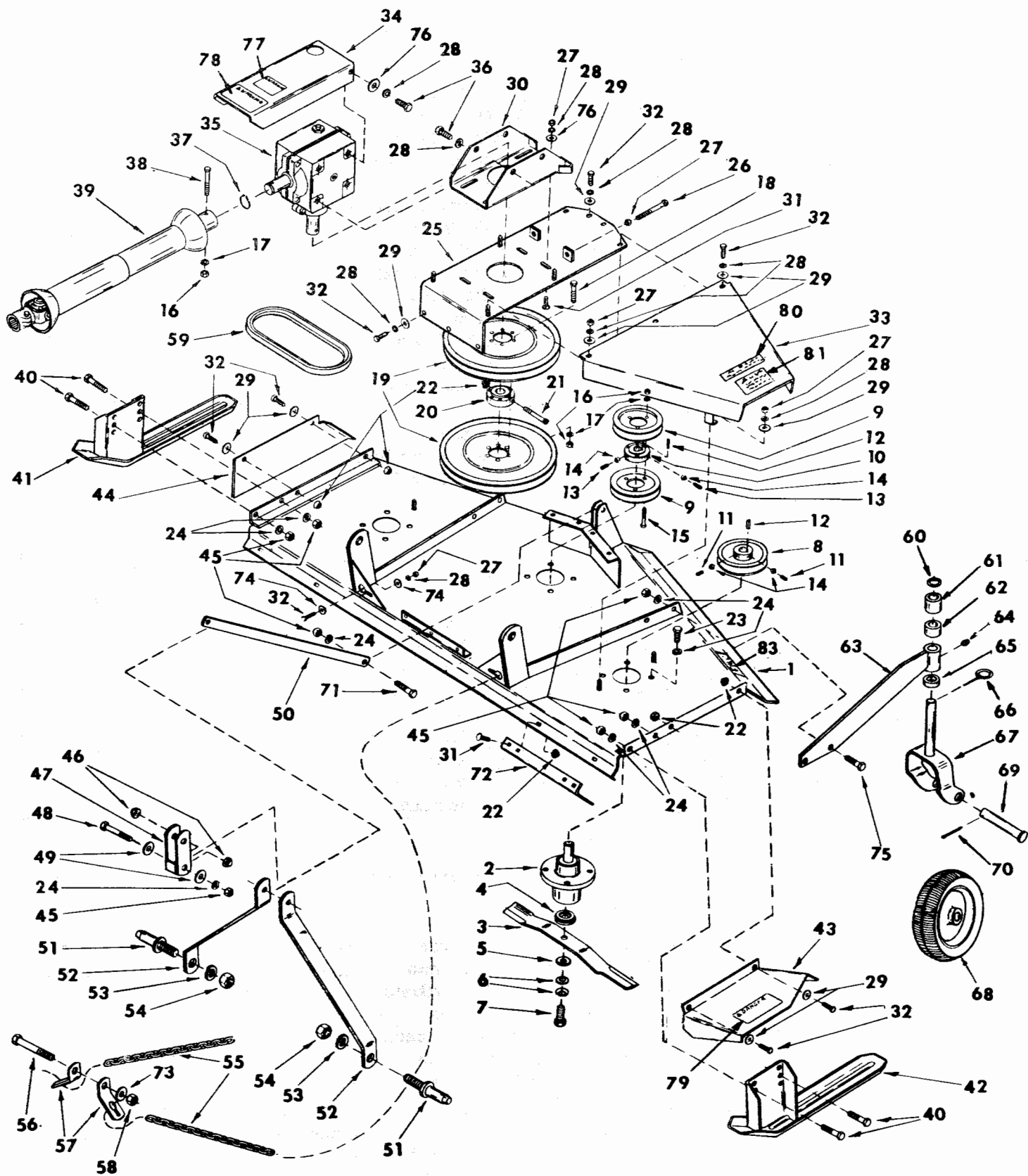
**Safety and
Operation
Instructions**



THE JUST-RIGHT TRACTOR for turf, commercial and agricultural chores

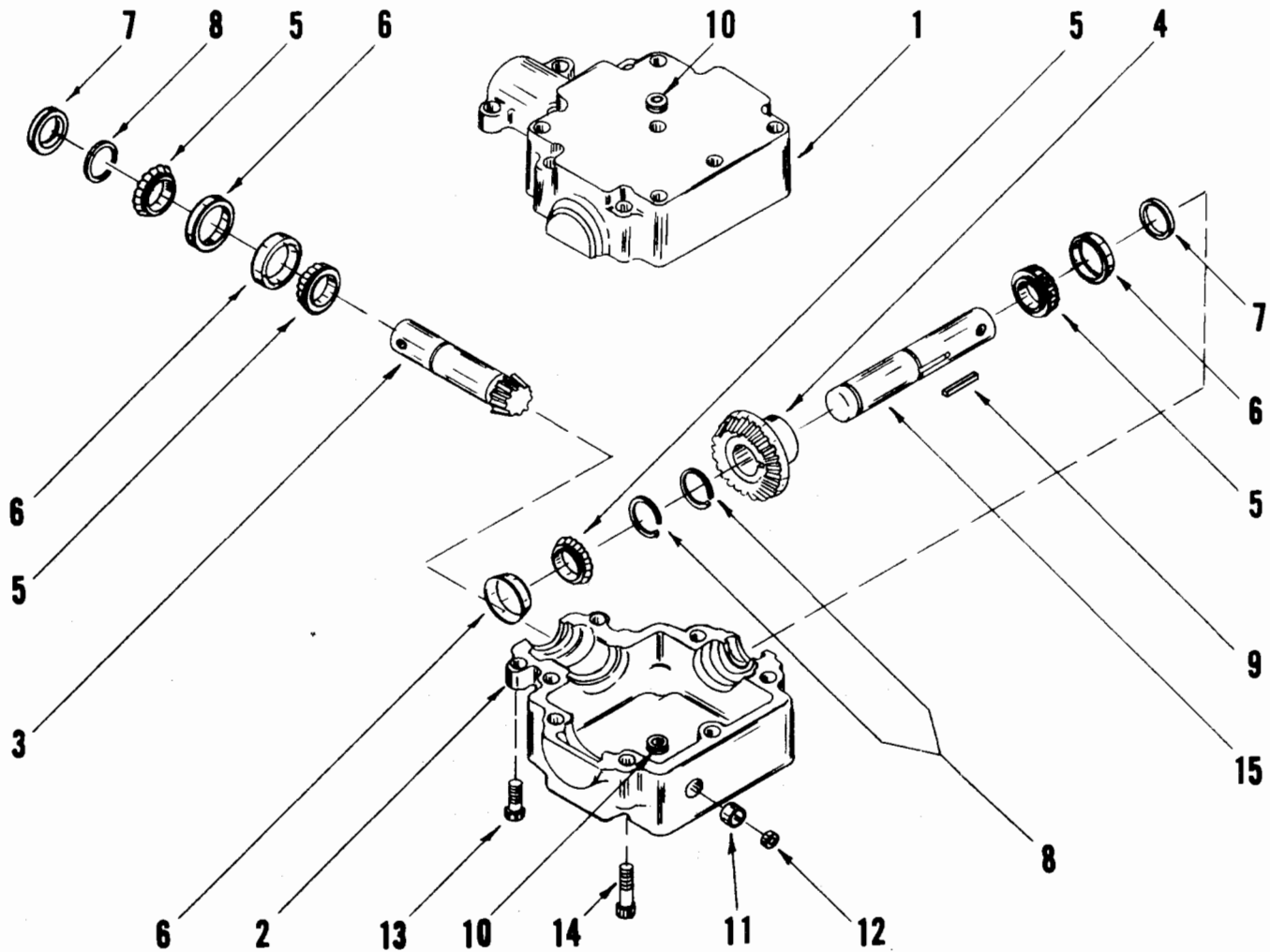
FORM 553279 -1 (8/78)

48 INCH MOWER ATTACHMENT



REF. NO.	PART NO.	DESCRIPTION	NO. REQ'D.	REF. NO.	PART NO.	DESCRIPTION	NO. REQ'D.
1	1812000	Platform W.A.	1	40 •	1100055	Cap Screw-1/2-13 x 1-1/4 Gr. 5	4
2	1812001	Spindle ASM	3	41	1812024	Runner W.A.-R.H.	1
3	1812002	Blade	3	42	1812025	Runner W.A.-L.H.	1
4	1812003	Washer, Shoulder	3	43	1812026	Shield, Discharge	1
5	1812004	Flat Washer-5/8 Type A .	3	44	1812027	Shield, End	1
6	1812005	Washer Cup	6	45 •	1186233	Hex Nut-1/2-13	10
7	1812006	Cap Screw-5/8 LH-THD x 1-1/2 Gr. 5 NY-Loc	3	46	1812028	Bushing-1.0 Dia. x .73 Lg.	2
8	1812007	Sheave-5.5 O.D. x .75 bore	2	47	1812029	Link W.A.-Pivot	1
9	1812008	Sheave-5.5 O.D. (bolt to hub)	2	48 •	1100066	Cap Screw-1/2-13 x 3-1/2 Gr. 5	1
10	1812009	Hub-Sheave	1	49 •	1107385	Flat Washer-1/2	2
11	1812010	Set Screw-5/16 x 1	4	50	1812030	Link	1
12	1812011	Key-3/16 sq x 1-1/4	3	51	1812031	Pin, Link	2
13	1733185	Set Screw-5/16 x 1-1/2 .	2	52	1812032	Mast-Bar	2
14 •	1186258	Jam Nut-5/16-18	6	53	1812033	Lock Washer-7/8	2
15 •	1100779	Cap Screw-5/16-18 x 1-3/4 Gr. 5	3	54	1812034	Hex Nut-7/8 UNF	2
16 •	1186230	Hex Nut-5/16-18	9	55	1812035	Chain, Limit-40 Links ..	2
17 •	1100242	Lock Washer-5/16	9	56	1812036	Cap Screw-3/4 x 4 Gr. 5.	1
18	1812012	Full Thread Cap Screw 5/16 x 1-3/4 Gr. 5	6	57	1812037	Lub, Lockout Chain	2
19	1812013	Sheave-11.00 O.D.	2	58	1812038	Hex Nut-3/4	1
20	1812014	Hub-Sheave	1	59	1812039	Belt, V	2
21	1812015	Socket Cap Screw 3/8 x 2-1/2 Gr. 8	1	60	1812040	M.B.-1.0 x 10 Ga.	2
22	1186393	Flanged Lock Nut-3/8-16.	9	61	1812041	Spacer-1-1/2	2
23	1812016	Cap Screw-1/2-20 x 1 fine thd. Gr. 5	12	62	1812042	Spacer-1	2
24 •	1100245	Lock Washer-1/2	22	63	1812043	Arm W.A.	2
25	1812017	Plate W.A.-Gearbox	1	64	1812072	Zerk-1/4-28 St.	2
26 •	1100062	Cap Screw-3/8-16 x 2-1/2	2	65	1812045	Spacer-1/2	2
27 •	1186231	Hex Nut-3/8-16	16	66	1812046	Klik-Pin	2
28 •	1100243	Lock Washer-3/8	27	67	1812047	Guide Wheel Fork W.A. ..	2
29 •	1107383	Flat Washer-3/8	18	68	1812048	Wheel w/Bushings	2
30	1812018	Bracket W.A.-Gearbox ...	1	69	1812049	Axle Pin	2
31 •	1186128	Carr. Bolt-3/8-16 x 1 ..	8	70	1812050	Pin-Ct 3/16 x 1-1/2	2
32 •	1100046	Cap Screw-3/8-16 x 1 ...	13	71 •	1100064	Cap Screw-1/2-13 x 1-1/2 Gr. 5	1
33	1812019	Shield W.A.-Belt	2	72	1812051	Guard, Toe	2
34	1812020	Shield-Universal	1	73	1812052	Lock Washer-3/4	1
35	1812021	Gearbox ASM	1	74	1812053	Flat Washer-3/8 Type B .	4
36 •	1100046	Cap Screw-3/8-16 x 1 ...	6	75 •	1100065	Cap Screw-1/2-13 x 1-3/4 Gr. 5	4
37	1812022	Retaining Ring	1	76 •	1107383	Flat Washer-3/8 Type A .	6
38 •	1111609	Cap Screw-5/16-18 x 2-3/4 Gr. 5	1	77	1812096	Warning Decal	1
39	1812023	Universal ASM	1	78	1812100	Warning Decal	1
				79	1812093	Danger Decal	1
				80	1812094	Danger Decal	2
				81	1812095	Be Careful Decal	2
				82	1727451	FMC Decal	2

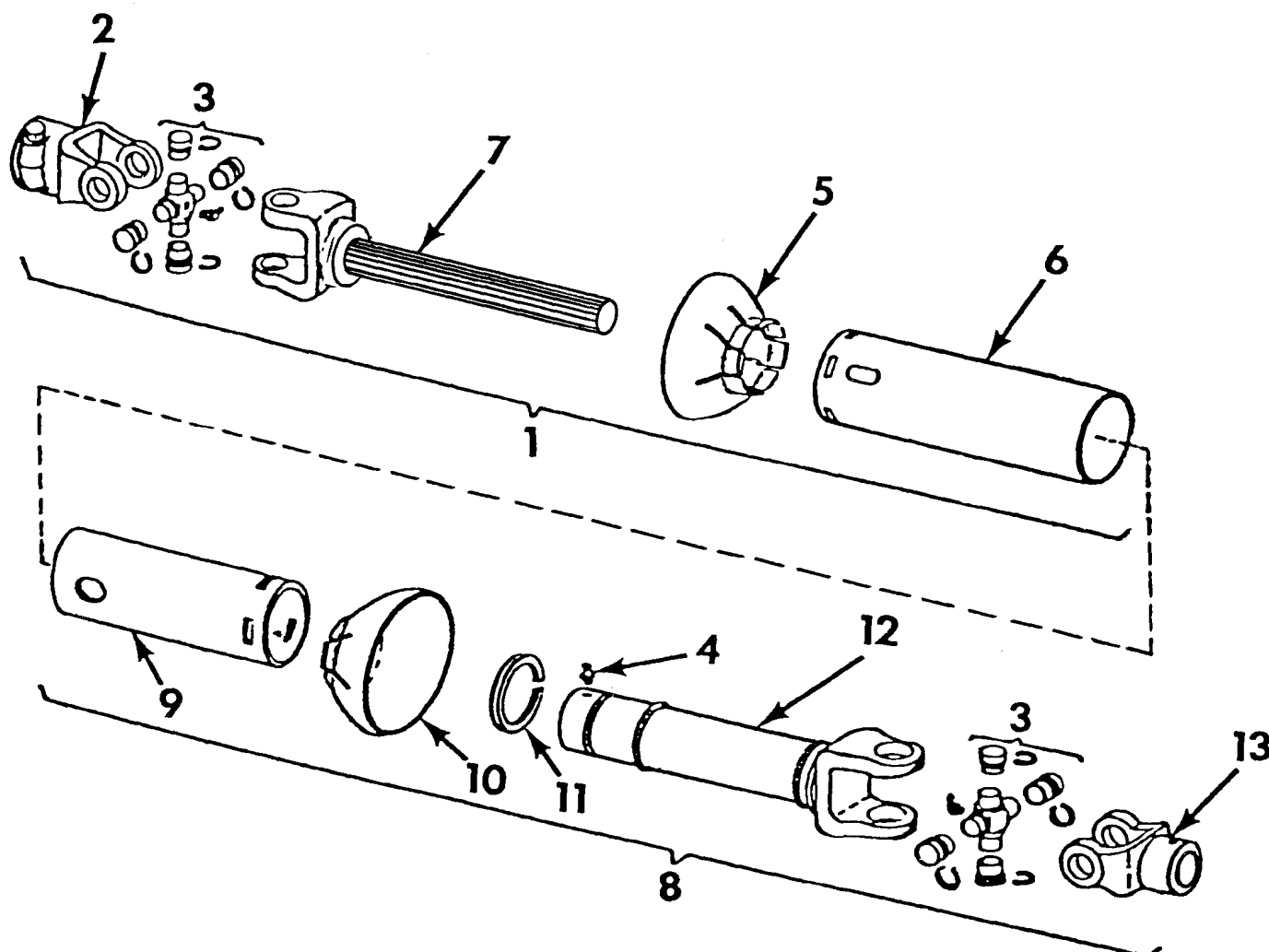
48 INCH MOWER GEAR BOX ASSEMBLY



GEARBOX ASSEMBLY

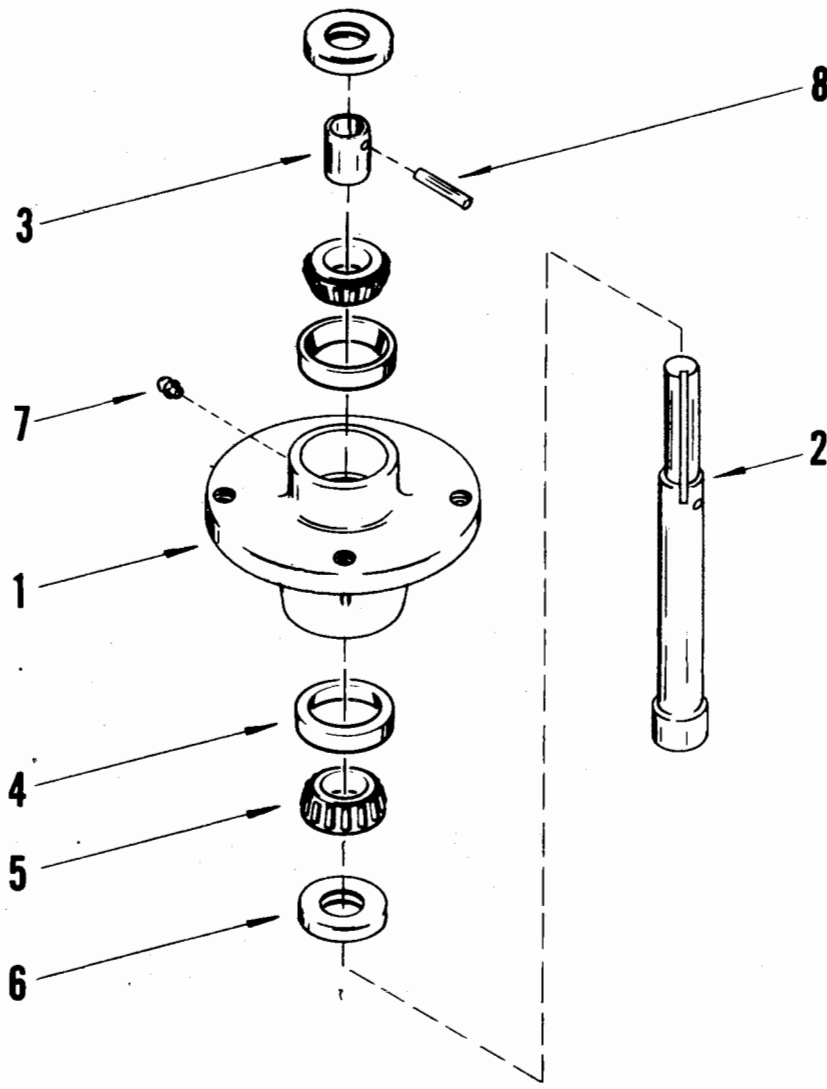
REF. NO.	PART NO.	DESCRIPTION	NO. REQ'D.	REF. NO.	PART NO.	DESCRIPTION	NO. REQ'D.
1	1812054	Housing-thru Holes	1	10	1812063	Plug	2
2	1812055	Housing-threaded Holes .	1	11	1812064	Busing, Pipe	1
3	1812056	Shaft-Pinion	1	12	1812065	Plug-Pressure Relief ...	1
4	1812057	Gear	1	13	1812066	SHCS-3/8 x 1-1/2	2
5	1812058	Bearing Cone	4	14	1812015	SHCS-3/8 x 2-1/2	7
6	1812059	Bearing Cup	4	15	1812068	Shaft-Cross	1
7	1812060	Oil Seal	2	16	1812096	Loctite	
8	1812061	Retaining Ring	3	17	1812092	Locquic Primer	
9	1812062	Key	1				

UNIVERSAL ASSEMBLY



REF. NO.	PART NO.	DESCRIPTION	NO. REQ'D.	REF. NO.	PART NO.	DESCRIPTION	NO. REQ'D.
1	1812069	Tractor Half Complete ..	1	8	1812076	Tiller Half Complete ...	1
2	1812070	Yoke-Splined	1	9	1812077	Shield-Inner	1
3	1812071	Cross Repair Kit	2	10	1812078	Bell-Inner Shield	1
4	1812072	Grease Fitting	2	11	1812079	Support Bearing	1
5	1812073	Bell-Outer Shield	1	12	1812080	Yoke & Tube Assembly ...	1
6	1812074	Shield-Outer	1	13	1812081	Yoke-1" Bore	1
7	1812075	Yoke & Splined Shaft Assembly	1				

SPINDLE ASSEMBLY



REF. NO.	PART NO.	DESCRIPTION	NO. REQ'D.	REF. NO.	PART NO.	DESCRIPTION	NO. REQ'D.
1	1812082	Housing	1	5	1812086	Cone	2
2	1812083	Shaft	1	6	1812087	Seal	2
3	1812084	Sleeve	1	7	1812072	Grease Fitting	1
4	1812085	Cup	2	8	1812089	Pin-Self Lock	1

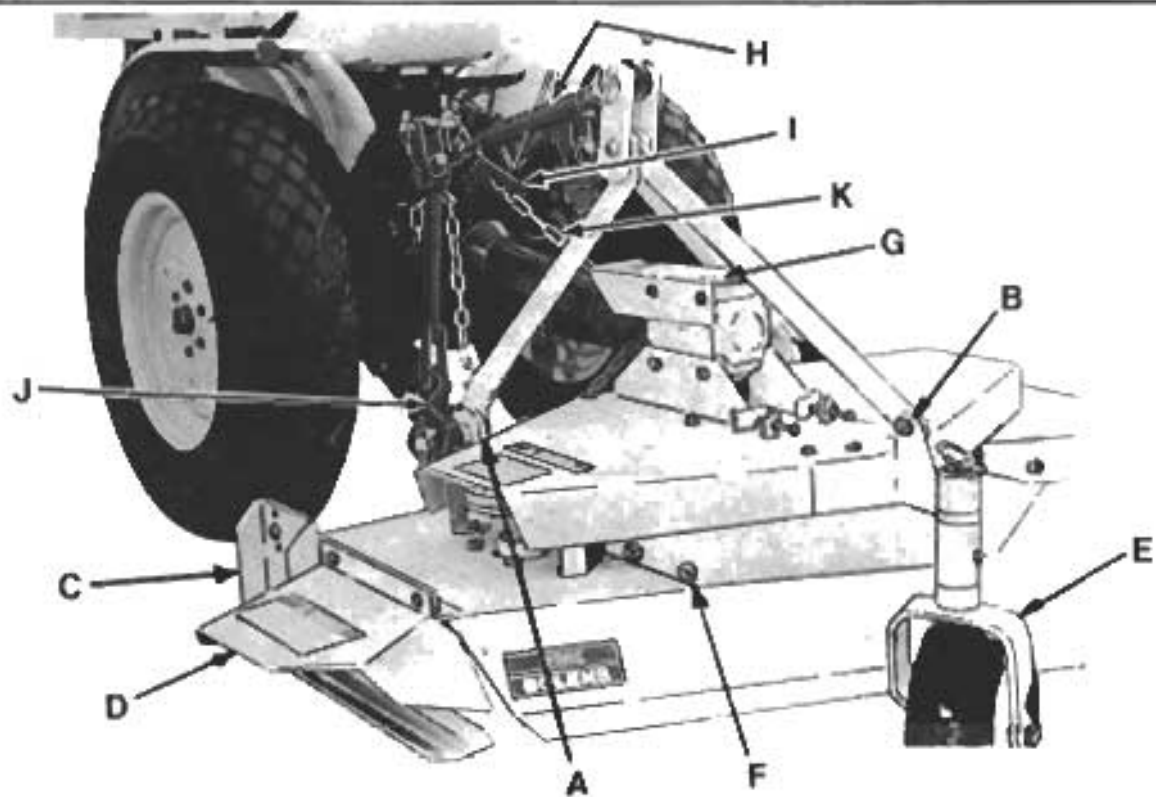


Fig 2