
Bolens®

Tractor 8HP & 11HP

Models 812(LT8)

Serial Number 0100101
thru 0199999

814(LT8E)

1113(LT11)

Serial Number 0100101
thru 0299999

Parts List

BOLENS 8 HP & 11 HP TRACTORS

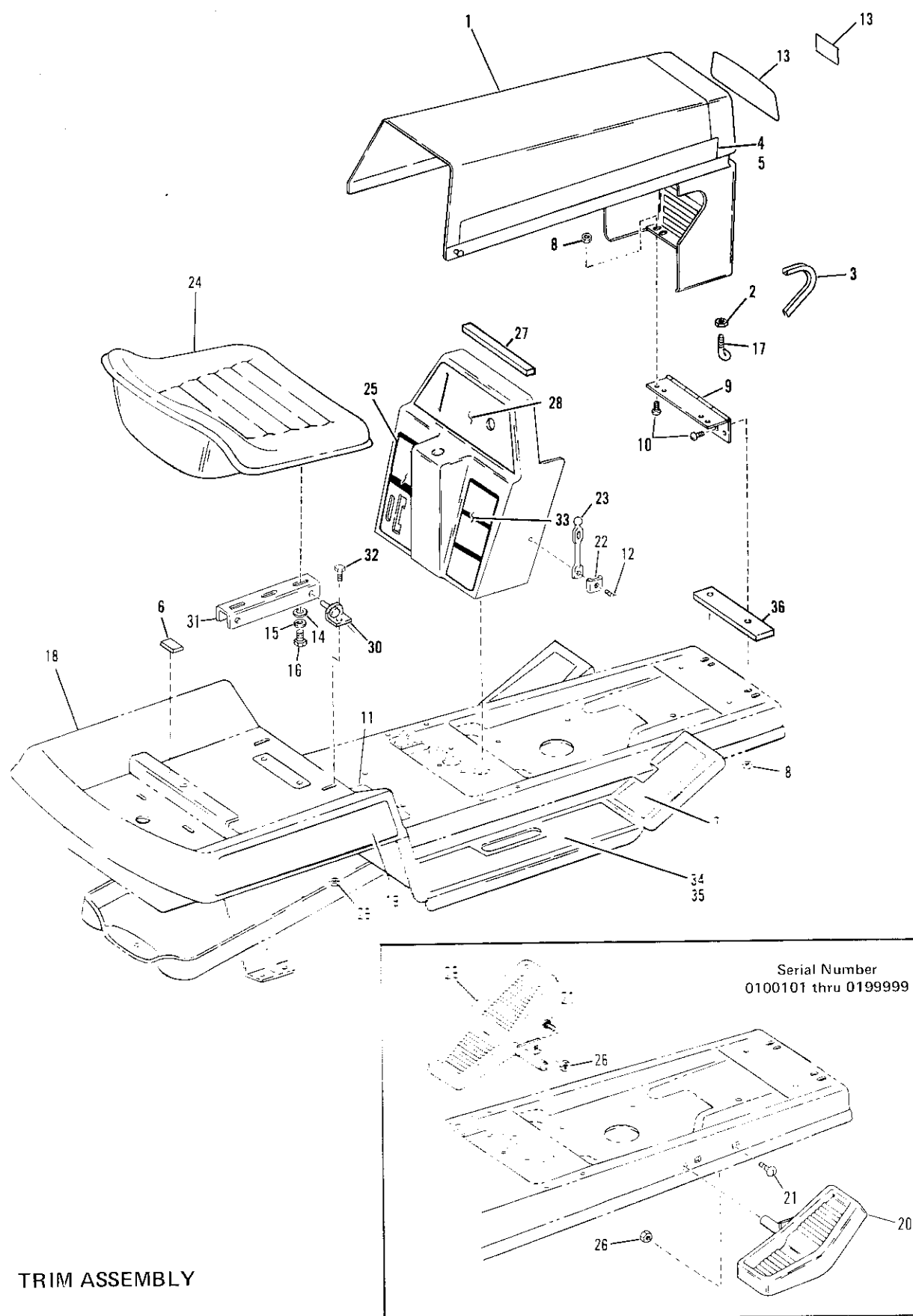


Figure 1 TRIM ASSEMBLY

MODELS 812 (LT8), 814 (LT8E) & 1113 (LT11)

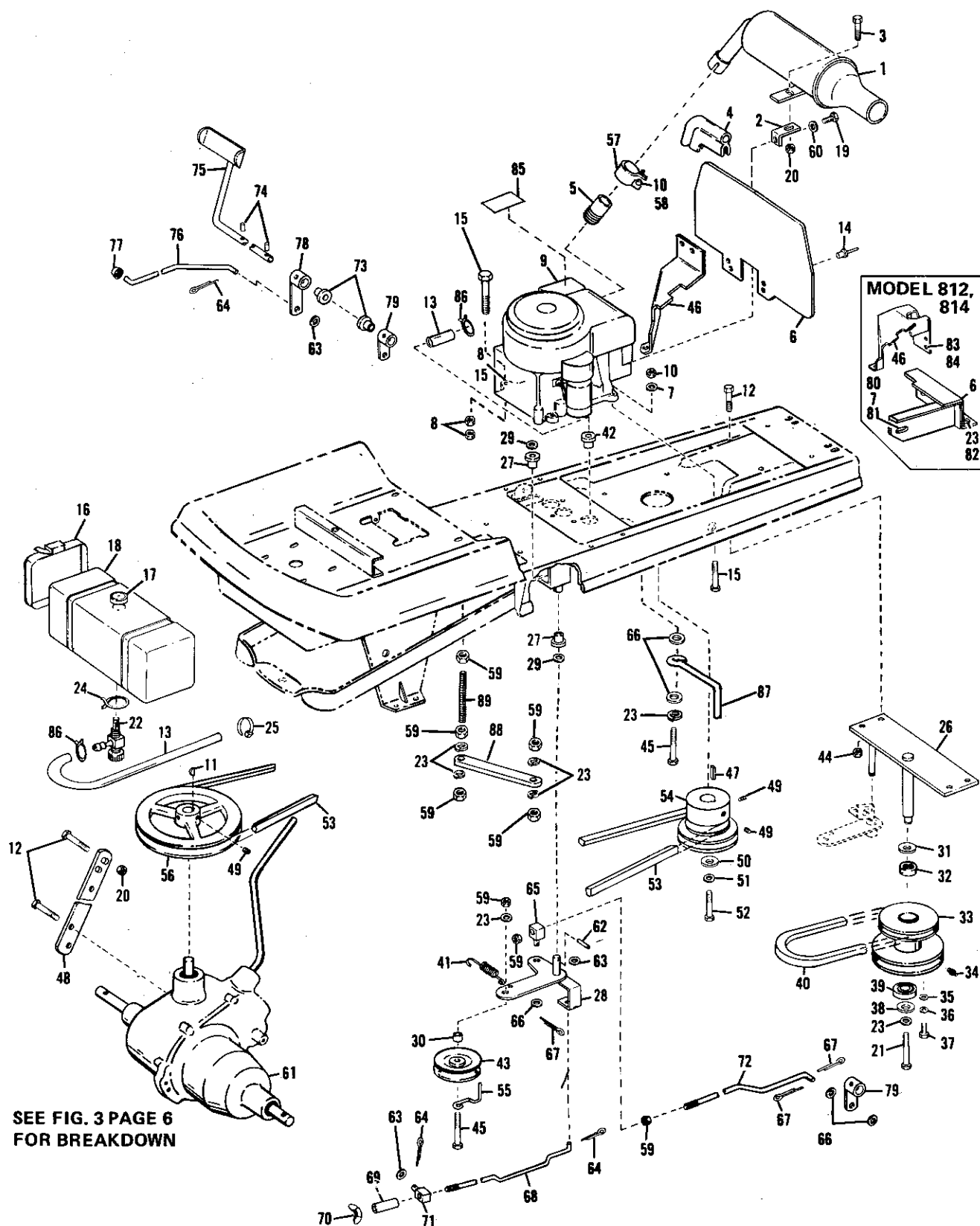
REF. NO.	PART NO.	DESCRIPTION	NO. REQ'D.	REF. NO.	PART NO.	DESCRIPTION	NO. REQ'D.
1	1737869	Hood without Decals	1	19	1737310	Fender Decal, R.H. (812)	1
2	1186229	Hex Nut, 1/4-20	5		1737311	Fender Decal, R.H. (814)	1
3	1738065	Trim (814 & 1113)	1		1737312	Fender Decal, R.H. (1113)	1
4	1737452	Decal, R.H.	1	20	1737427	Foot Rest, R.H. (1)	1
5	1737451	Decal, L.H.	1	21 •	1186098	Carriage Bolt, 5/16-18 x 3/4 (1).	2
6	1732056	Rubber Pad	2	22	1727126	Clip	2
7	1740932	Foot Pad (2)	2	23	1727127	Latch	2
8	1186389	Flange Lock Nut 1/4-20 (2) . . .	4	24	1735824	Seat	1
9	1722319	Hinge	1	25	1738638	Decal, Dash Panel, L.H.	1
10 •	1115931	Phil. Hd. Screw, 1/4-20 x 5/8.	3	26 •	1186391	Flange Lock Nut, 5/16-18 (1) .	4
11	1737453	Decal, Shift & Brake	1	27	1717973	Rubber Pad	1
12	1728772	Pop Rivet, 3/16"	2	28	1738636	Decal, Dash (812)	1
13	1737450	Grille Decal (812 & 814)	1		1738637	Decal, Dash (814 & 1113)	1
	1737877	Grille Decal (1113)	1	29	1722253	Foot Rest, L.H. (1)	1
14 •	1107382	Flat Washer, 5/16	4	30	1737326	Support.	2
15 •	1100242	Lockwasher, 5/16	4	31	1722433	Seat Support	2
16 •	1103195	Capscrew, 5/16-18 x 5/8.	4	32 •	1186329	Flange Screw, 5/16-18 x 3/4 . .	2
17	1738064	Hood Bolt Stop.	1	33	1738639	Decal, Dash Panel, R.H.	1
18	1737307	Fender Decal, L.H. (812)	1	34	1740934	R.H. Foot Pad (2)	1
	1737308	Fender Decal, L.H. (814)	1	35	1740933	L.H. Foot Pad (2)	1
	1737309	Fender Decal, L.H. (1113)	1	36	1738850	Spacer Plate (1113)	1

•Common Hardware - Purchase Locally (Grade 5 where applicable.)

(1) Serial Number 0100101 thru 0199999

(2) Serial Number 0200101 thru 0299999

BOLENS 8 HP & 11 HP TRACTORS



SEE FIG. 3 PAGE 6
FOR BREAKDOWN

Figure 2. ENGINE AND DRIVE ASSEMBLY

MODELS 812 (LT8), 814 (LT8E) & 1113 (LT11)

REF. NO.	PART NO.	DESCRIPTION	NO. REQ'D.	REF. NO.	PART NO.	DESCRIPTION	NO. REQ'D.
1	1737435	Muffler (812 & 814)	1	48	1737339	Support, Trans	1
	1736975	Muffler (1113)	1	49	1185919	Set Screw, 5/16-18	4
2	1738023	Muffler Bracket (812 & 814)	1	50	• 1100265	Flat Washer, 7/16	1
	1738022	Muffler Bracket (1113)	1	51	• 1100244	Lockwasher, 7/16	1
3	1186329	Flange Screw, 5/16-18 x 3/4	1	52	• 1738598	Capscrew, 7/16-20 x 1	1
4	1737455	Seal Strip (1113)	1	53	1737347	Drive Belt, 69-1/4" (812)	1
5	1105707	Pipe Nipple, 3/4 N.P.T. (812 & 814)	1		1732726	Drive Belt, 71-1/4" (814 & 1113 S/N 01)	1
	1737315	Pipe Nipple, 3/4 N.P.T. (1113)	1		1741135	Drive Belt, 70-11/16" (814 & 1113 S/N 02)	1
6	1737588	Heat Shield (1113)	1	54	1736544	Engine Sheave	1
	1738589	Heat Shield (812 & 814)	1	55	1737594	Belt Guide (1)	1
7	• 1100242	Lockwasher, 5/16	4	56	1736489	Transmission Sheave (812)	1
8	• 1110107	Lock Nut, 5/16-18	2		1732740	Transmission Sheave (814 & 1113)	1
9	*	Briggs & Stratton Engine, 191707-5651 (814)	1	57	1729779	Muffler Clamp (812 & 814 S/N 01)	1
		191702-5650 (812)	1		1737316	Muffler Clamp (1113 & 814 S/N 02)	1
		252707-0189 (1113)	1	58	• 1186102	Carriage Bolt, 5/16-18 x 1-1/4	1
10	• 1186230	Hex Nut, 5/16-18	4	59	• 1186231	Hex Nut, 3/8-16	8
11	1185885	Woodruff Key, 3/16	1	60	• 1100241	Lockwasher, 1/4	1
12	• 1186329	Flange Screw, 5/16-18 x 3/4	8	**61	1737062	Transmission (1)	1
13	1735561	Fuel Line	1		1741133	Transmission (2)	1
14	1186057	Pop Rivet	2	62	1704692	Roll Pin	1
15	• 1100799	Capscrew, 5/16-18 x 1-1/2	4	63	• 1107382	Flat Washer, 5/16	3
16	1737335	Tank Strap	2	64	• 1185147	Cotter Pin, 3/32 x 5/8	3
17	1723473	Cap Only	1	65	1714663	Swivel Block	1
18	1733371	Fuel Tank	1	66	• 1107383	Flat Washer, 3/8	3
19	• 1111599	Hex Screw, 1/4-20 x 5/8	1	67	• 1100346	Cotter Pin, 3/32 x 3/4	3
20	• 1186391	Flange Nut, 5/16-18	3	68	1736495	Brake Rod	1
21	• 1103212	Capscrew, 3/8-16 x 5/8	2	69	1722346	Spacer	1
22	1718029	Tank Outlet	1	70	1806192	Wing Nut, 5/16-18	1
23	• 1100243	Lockwasher, 3/8	9	71	1724627	Swivel	1
24	1723474	Hose Clamp	1	72	1736462	Brake Clutch Rod	1
25	1805345	Tie Cable	2	73	1714299	Nylon Bushing	2
26	1736521	PTO Plate Assy	1	74	• 1120210	Roll Pin, 3/16 x 1	2
27	1715538	Nyliner	2	75	1737424	Foot Pedal Assy	1
28	1736494	Idler Arm Assembly	1	76	1736446	Brake Lock Assy	1
29	1107385	Flat Washer, 1/2	2	77	1736466	Push On Knob	1
30	1713783	Spacer	1	78	1736470	Brake Lock Arm	1
31	1185601	Oil Seal	1	79	1736469	Brake Clutch Arm Assy	1
32	1185007	Needle Bearing	1	80	• 1107382	Flat Washer, 5/16 (812 & 814)	1
33	1736530	PTO Sheave	1	81	• 1103195	Hex Screw, 5/16-18 x 5/8 (812 & 814)	1
34	1185976	Grease Fitting	1	82	• 1186231	Hex Nut, 3/8-16 (812 & 814)	2
35	• 1103959	Flat Washer, No. 10	3	83	• 1185456	Tinnerman Nut, 1/4-20 (812 & 814)	2
36	• 1100240	Lockwasher, No. 10	3	84	• 1111599	Hex Screw, 1/4-20 x 5/8 (812 & 814)	2
37	• 1100115	Screw, No. 10-14 x 1/2	3	85	1736298	Hot Surface Decal	1
38	1893445	Flat Washer, 3/8	1	86	1718185	Hose Clamp	2
39	1120502	Ball Bearing	1	87	1742866	Belt Guide (2)	1
40	1732582	PTO Belt, 31"	1	88	1741057	Gelt Guide (2)	1
41	1723041	Extension Spring	1	89	1741052	Stud (2)	1
42	1737338	Snap Bushing	1				
43	1715340	Idler Pulley	1				
44	• 1186391	Flange Nut, 5/16-18	4				
45	• 1100062	Capscrew, 3/8-16 x 2-1/2	2				
46	1738587	Heat Shield (812 & 814)	1				
	1737591	Heat Shield (1113)	1				
47	1187474	Square Key, 1/4 x 2-1/4	1				

*Common Hardware - Purchase Locally (Grade 5 where applicable.)

*Purchase Parts from your Briggs & Stratton Outlet.

(1) Serial Number 0100101 thru 0199999

**Purchase Parts from your Tecumseh Dealer

(2) Serial Number 0200101 thru 0299999

BOLENS 8 HP & 11 HP TRACTORS

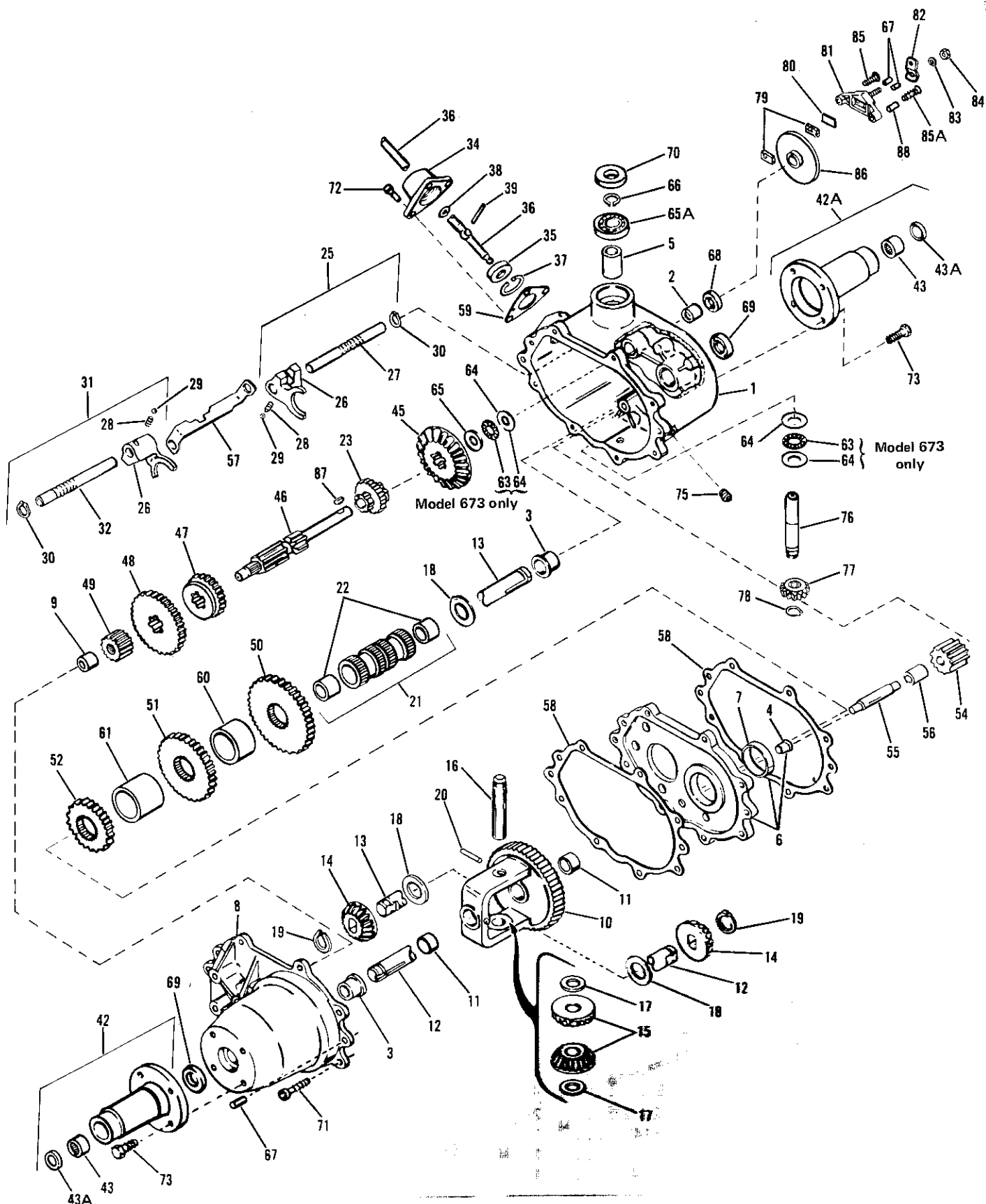


Figure 3. PEERLESS TRANSAXLE ASSEMBLY (MODEL 673)
 6 PEERLESS TRANSAXLE ASSEMBLY (MODEL 601-004)

ORDER PARTS FROM YOUR LOCAL TECUMSEH' LAUSON-POWER PRODUCTS OUTLET.

REF. NO.	PART NO.	DESCRIPTION	REF. NO.	PART NO.	DESCRIPTION
1	770063	Case Assy., Transaxle (Incl. Nos. 2, 3 & 5)	46	776138	Shaft, Shifter & Brake
2	780086	Bearing, Needle	47	778058	Gear, Shifting (2nd & 3rd)
3	780059	Bearing, Bronze	48	778059	Gear, Shifting (1st & Rev.)
4	780060	Bearing, Bronze	49	778060	Gear, Spur (12 teeth) (A)
5	780061	Bearing, Bronze		778150	Gear, Spur (11 teeth) (B)
6	786033	Plate Assy., Center (Incl. Nos. 4 & 7)	50	778140	Gear, Countershaft drive (39 teeth)
7	780062	Bearing, Bronze	51	778141	Gear, Countershaft (34 teeth)
8	772042	Cover Assy., Transaxle (incl. Nos. 3 & 9)	52	778142	Gear, Countershaft (25 teeth)
9	780063	Bearing, Needle	54	778064	Gear, Reverse Idler
10	778053A	Gear Assy., Differential (Incl. No. 11)	55	776057	Shaft, Reverse Idler
11	780064	Bearing, Bronze	56	786036	Spacer, Reverse Idler
12	774410	Axle, Left hand	57	784087	Stop, Shifter
13	774411	Axle, Right hand	58	788033	Gasket, Case & Cover
14	778067	Gear, Bevel	59	788003	Gasket, Shift lever housing
15	778068	Pinion, Bevel	60	786079	Spacer
16	786034	Pin, Drive	61	786078	Spacer
17	780065	Washer, Thrust	63	780071	Bearing, Thrust (A)
18	780001	Washer, Thrust	64	780072	Washer, Thrust
19	788038	Ring, Snap	65	780073	Washer, Thrust (A)
20	792040	Pin, Roll		780065	Washer, Thrust (B)
21	786080	Sleeve Assy., Countershaft (Incl. No. 22)	65A	780093	Bearing, Ball
22	780066	Bearing, Bronze	66	792035	Ring, Snap
23	776190A	Shaft & Gear, Idler	67	786026	Pin, Dowel
25	784079	Rod Assy., Shift (1st & Rev.) (Incl. Nos 26 thru 30)	68	788043	Seal, Oil
26	784004	Fork, Shift	69	788009	Seal, Oil
27	784083	Rod, Shift	70	788035	Seal, Oil
28	792003	Spring	71	792036	Screw, Flanged hex hed., 1/4-20 x 1-1/4
29	792004	Ball, Steel	72	792007	Screw, Flanged hex hd., 1/4-20 x 3/4
30	792017	Ring, Snap	73	792037	Screw, Hex hd., Sems, 5/16-18 x 1
31	784084	Rod Assy., Shift (2nd & 3rd) (Incl. Nos. 26, 28, 29, 30 & 32)	75	792039	Plug, Pipe, 1/8"
32	784085	Rod, Shift	76	776103	Shaft, Input (A)
34	784088	Housing, Shift lever		776200	Shaft, Input (B)
35	784094	Keeper, Shift lever	77	778077	Pinion, Input (A)
36	784310	Lever, Shift		778149	Pinion Input (B)
37	792016	Ring, Snap	78	788040	Ring, Retaining
38	792001	Ring, Quad	79	790006	Pad, Brake
39	792049	Pin, Drive	80	790007	Plate, Brake pad
42	782036A	Housing Assy., Axle (Incl. Nos. 43 & 43A)	81	790005	Holder, Brake pad
42A	782038A	Housing Assy., Axle (Incl. Nos. 43 & 43A)	82	790004	Lever, Brake
43	530105	Bearing, Needle	83	792076	Washer, Flat
43A	788042	Seal, Oil	84	792075	Nut, Lock
45	778057	Gear, Bevel (33 teeth) (A)	85	792073	Screw, Hex hd. thr'd forming, 1/4-20 x 1-1/4
	778148	Gear, Bevel (42 teeth) (B)	85A	792085	Screw, Hex hd. thr'd forming, 1/4-20 x 2-1/4
			86	790009	Disk, Brake
			87	792045	Key, Woodruff No. 61
			88	786066	Spacer

BOLENS 8 HP TRACTORS

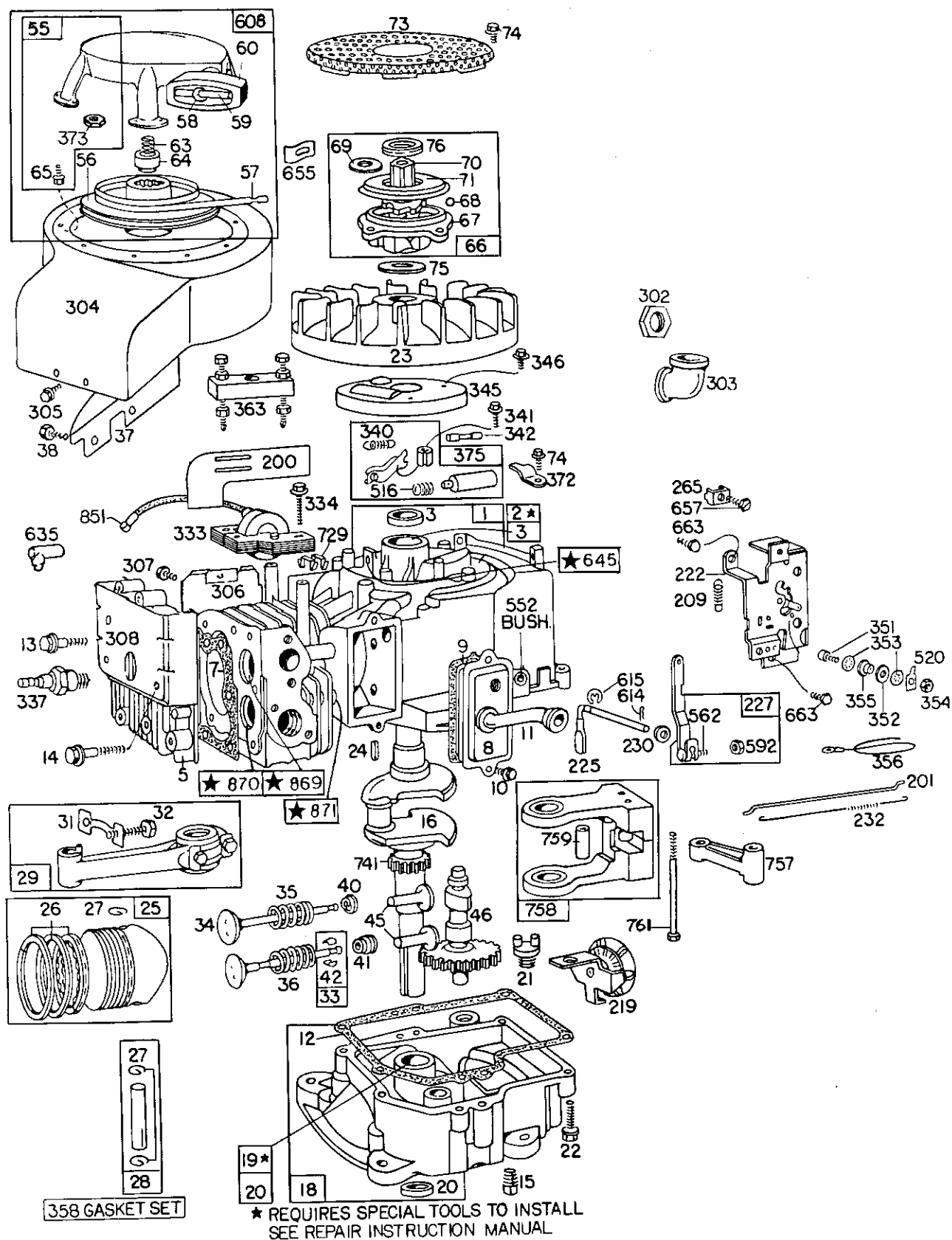


Figure 4. MODEL 812 (BRIGG'S & STRATTON ENGINE ASSEMBLY 191707-5650-01)

121 CARBURETOR OVERHAUL KIT

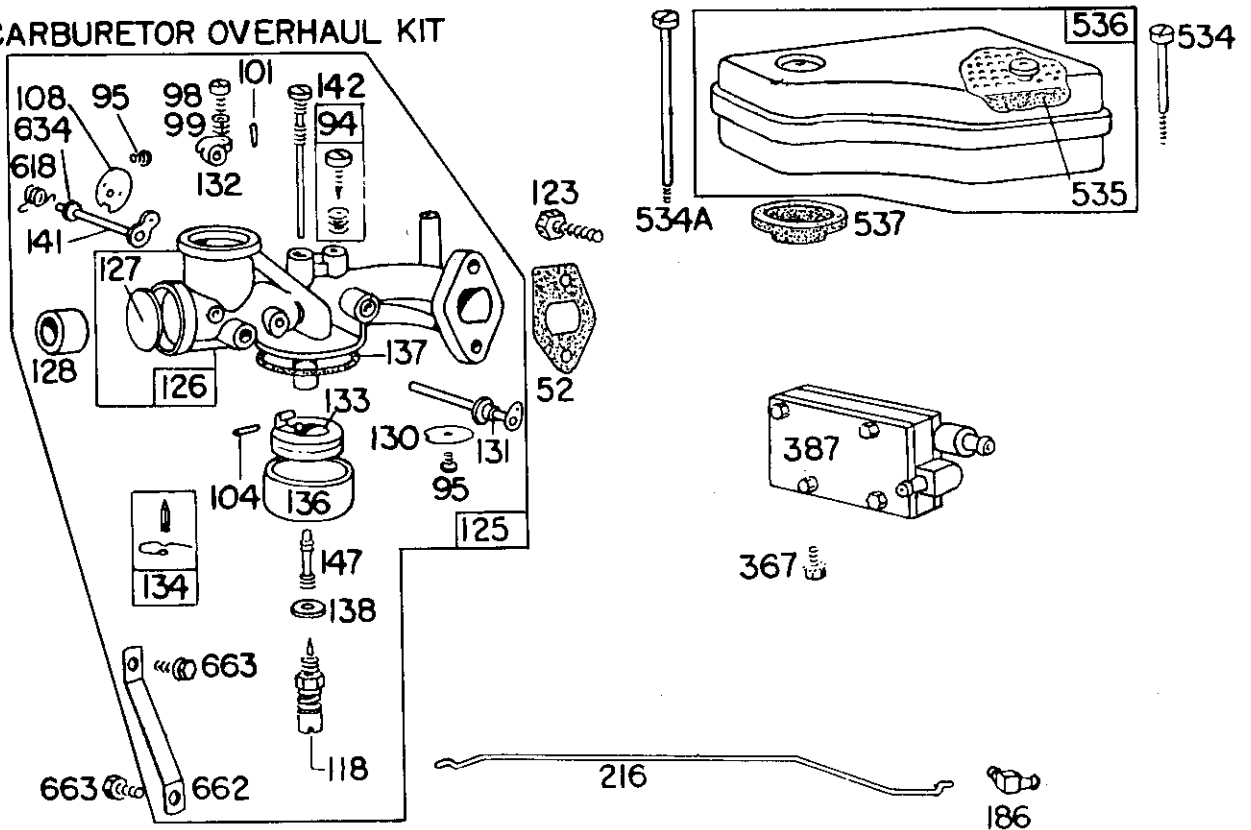


Figure 4A. MODEL 812 (BRIGG'S & STRATTON ENGINE ASSEMBLY 191707-5650-01)

BOLENS 8 HP TRACTORS

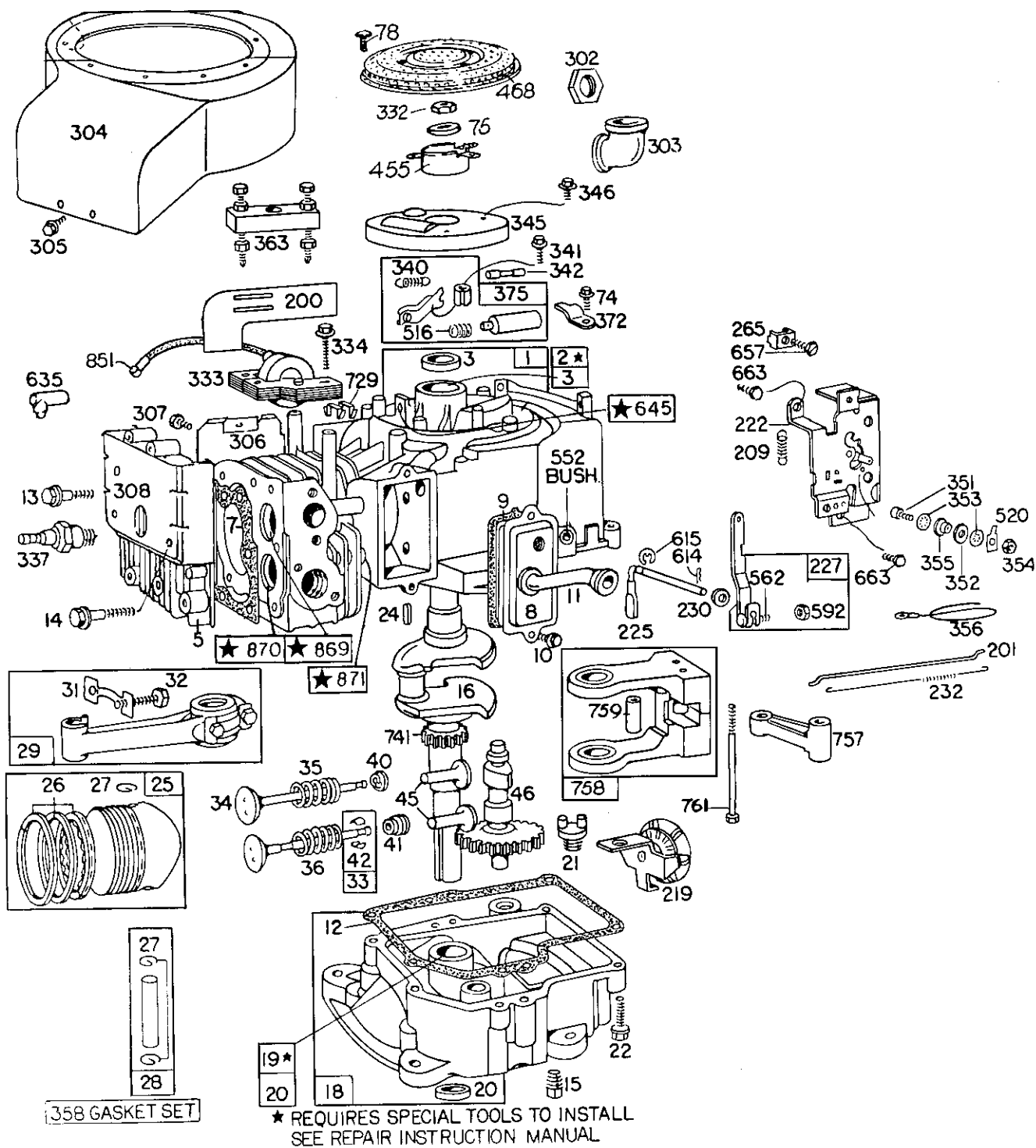


Figure 5. MODEL 814 (BRIGGS & STRATTON ENGINE ASSEMBLY 191707-5651-01)

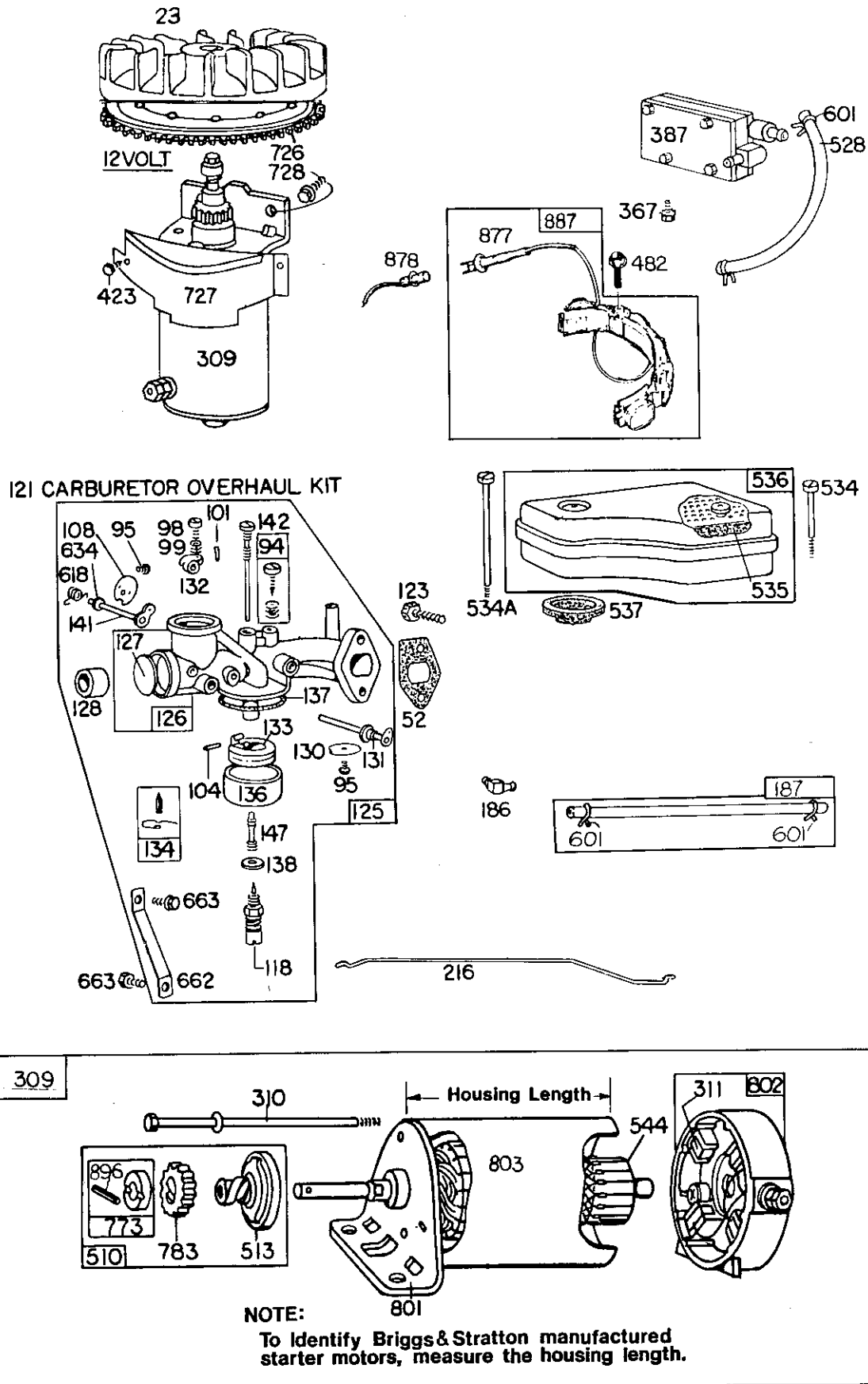


Figure 5A. MODEL 814 (BRIGG'S & STRATTON ENGINE ASSEMBLY 191707-5651-01)

BOLENS 8 HP TRACTORS

REF. NO.	PART NO.	DESCRIPTION
1	393675	Cylinder Assembly
2	391726	Bushing—Cylinder
	Note:	Requires special tools for installation.
3	294606	Seal—Oil
5	212286	Head—Cylinder
7 *	270430	Gasket—Cylinder Head
8	392849	Breather Assembly
9 *	27803	Gasket—Valve Cover
10	93536	Screw—Sem
11	280005	Tube—Breather
12 *	27750	Gasket—Crankcase Cover—1/64" thick
	27876	Gasket—Crankcase Cover—.005" thick
	27877	Gasket—Crankcase Cover—.009" thick
13	93211	Screw—Cylinder Head (2-21/32" long)
14	93723	Screw—Cylinder Head (3" long)
15	91084	Plug—Oil Drain
16	390370	Crankshaft
18	298616	Sump—Oil
19	295963	Bushing—Oil Sump
	Note:	Requires special tools for installation.
20	298423	Seal—Oil
21	66768	Plug—Oil Filler
22	93585	Screw—Sump Mounting Sem
23	298260	Flywheel-Magneto (2)
	391983	Flywheel and Ring Gear Assy.—Magneto For use on engines WITH ALTERNATOR. (Includes aluminum ring gear). For use only with starter motors with Plastic Drive Gear. (1)
24	61760	Key—Flywheel
25	391673	Piston Assy.—Std.
	391674	Piston Assembly—.010" O.S.
	391675	Piston Assembly—.020" O.S.
	391676	Piston Assembly—.030" O.S.

REF. NO.	PART NO.	DESCRIPTION
PISTON RING SETS:		
	Note:	For Chrome Piston Ring Set—Standard Size—order No. 299743.
26	391669	Ring Set—Piston—Std.
	391670	Ring Set—Piston—.010" O.S.
	391671	Ring Set—Piston—.020" O.S.
	391672	Ring Set—Piston—.030" O.S.
27	68546	Lock—Piston Pin
28	295840	Pin Assembly—Piston—Standard
	295841	Pin Assembly—Piston—.005" O.S.
29	390402	Rod Assy.—Connecting
	Note:	For Connecting Rod with .020" Undersize Crankpin Bore—order No. 390773.
31	222114	Lock—Conn. Rod Screw
32	92659	Screw—Conn. Rod
33	390419	Valve—Exhaust
34	261055	Valve—Intake
35	65906	Spring—Intake Valve
36	26828	Spring—Exhaust Valve
37	222475	Guard—Flywheel (2)
38	93777	Screw—Sem (2)
40	221596	Retainer—Intake Valve
41	292260	Rotocoil—Exhaust Valve
42	93630	Retainer—Exhaust Valve Rotocoil (Two)
45	260933	Tappet—Valve
46	211689	Gear—Cam
52	270824	Gasket—Carburetor Mounting
55	393576	Housing—Rewind Starter (2)
56	295871	Pulley—Rewind Starter (2)
	Note:	Includes 63" Rope; if longer Rope is required, order Rope No. 66894 and cut to required length.
57	294303	Spring—Rewind Starter (2)

(1) Model 812 (BRIGG'S & STRATTON MODEL 191707-5650-01)

(2) Model 814 (BRIGG'S & STRATTON MODEL 191707-5651-01)

* Included in Gasket Set—Part No. 299577.

REF. NO.	PART NO.	DESCRIPTION
58	66884	Rope—Rewind Starter—(2) 63" long for use with Plastic Pulley; if longer Rope is needed, order No. 66894 and cut to required length.
59	230228	Pin—Starter Grip (2)
60	66728	Grip—Starter Rope (2)
63	260414	Spring—Ratchet (2)
64	230543	Adapter—Ratchet (2) Spring
65	93067	Screw—Stamped Steel Rewind Starter Housing Mtg. Sem (2)
66	298798	Clutch Assembly— Rewind Starter (2)
67	212132	Housing—Rewind Starter Clutch (2)
68	63770	Ball—Clutch (2)
69	66718	Washer—Starter Clutch, Thrust (2)
70	298799	Ratchet—Rewind (2) Starter Clutch
71	221653	Washer—Retainer (2)
73	221796	Screen—Rewind Starter (2)
74	93042	Screw—Sem
75	220865	Washer—Spring
76	68238	Washer—Ratchet Sealing (2)
78	93805	Screw—Sem (1)
94 †	292681	Valve Assembly— Carburetor Idle
95	93499	Screw—Throttle and Choke Valve Mtg. Sem
98	91920	Screw—Machine, Fill. Hd. 8-32 x 5/8"
99	26157	Spring—Throttle Adjustment
101	93043	Pin—Throttle Stop
104 †	230896	Pin—Float Hinge
108	222010	Valve—Choke
118 †	391233	Valve—Needle
121	299582	Carburetor Overhaul Kit
123	93357	Screw—Carburetor Mtg.
125	394042	Carburetor ASsembly (Choke-A-Matic)
126	394041	Body Assembly Carburetor
127 †	221997	Plug—Welch

REF. NO.	PART NO.	DESCRIPTION
128	211682	Venturi—Carburetor
130	221986	Valve—Throttle
131	391512	Shaft and Lever— Throttle
132	211712	Stop—Throttle
133	299707	Float—Carburetor
134 †	299096	Valve—Fuel Inlet
136	221995	Bowl—Float
137 †	270511	Gasket—Float Bowl
138 †	222014	Washer—Float Bowl
141	390684	Shaft and Lever—Choke
142 †	299740	Nozzle—Carburetor
147 †	230932	Screw—Nozzle
186	67218	Connector—Fuel Pipe
187	391498	Pipe—Fuel (1)
200	221760	Guide—Air
201	260971	Link—Governor
209	260871	Spring—Governor
216	261117	Link—Choke
219	392718	Oil Slinger, Gov. Gear and Bracket Assembly
222	390662	Plate—Gov. Control
225	231058	Crank—Governor
227	391733	Lever Assy.—Governor
230	222450	Washer—Gov. Lever
232	260584	Spring—Governor Link
265	221535	Clamp—Casing
302	261409	Locknut—Muffler and Elbow
303	91464	Elbow—Muffler—90
304	394003	Housing—Blower (2)
	393981	Housing—Blower (1)
305	93158	Screw—Blower Housing Mounting Sem
306	222830	Shield—Cylinder
307	93163	Screw—Cylinder Shield Mtg. Sem
308	222636	Cover—Cylinder Head
332	92284	Nut—Flywheel (1)
333	298968	Armature Assembly
334	93381	Screw—Armature Mounting Sem
337	293918	Plug—Spark (1-1/2" high— Resistor Type)
	Note:	Spark Plugs use Ignition Cable Terminal No. 221798.
340	26018	Spring—Breaker Arm

(1) Model 812 (BRIGG'S & STRATTON MODEL 191707-5650-01)

(2) Model 814 (BRIGG'S & STRATTON MODEL 191707-5651-01)

† Included in Carburetor Overhaul
Kit Part No. 299852.

BOLENS 8 HP TRACTORS

REF. NO.	PART NO.	DESCRIPTION	REF. NO.	PART NO.	DESCRIPTION
341	93381	Screw—Breaker Arm Mounting Sem	537	270539	Gasket—Air Cleaner
342	65704	Plunger—Breaker Point	552	231055	Bushing—Gov. Crank
345	222117	Cover—Breaker Point	562	92613	Bolt—Governor Lever
346	93705	Screw—Sem	592	231082	Nut—Hex., 10-24
351	91920	Screw—Terminal	601	93053	Clamp—Fuel Pipe (1)
352	66068	Washer—Insulating	608	390391	Starter Assy—Rewind
353	92791	Washer—Lock—Shakeproof (3)	614	93306	Cotter—Hair Pin
354	90576	Nut—Hex.—8-32 (2)	615	93307	Retainer—E-Ring
355	66554	Collar—Insulating	618	261116	Spring—Choke Return
356	299500	Wire—Ground	634	270382	Washer—Choke Shaft
358	299577	Gasket Set	635	66538	Elbow—Spark Plug
363	19165	Puller—Flywheel	645	23513	Bushing—Plunger
367	93380	Screw—Sem	655	222598	Anchor—Spring
		Rectifier Lead Wire	657	93496	Screw—Sem
372	220477	Clamp—Condenser	662	222027	Bracket—Carburetor
373	92987	Nut—Hex. (4)	663	93572	Screw
375	294628	Breaker Points and Condenser Set	726	392134	Gear—Ring (Aluminum) (Includes Mtg. Parts) (1)
	Note:	299061 Ignition Kit			For use only with Starter Motors with Plastic Drive Gear
		Includes: 294628 Point Set	727	390233	Cover and Shield—Starter (1)
		65704 Plunger	728	93523	Screw—Sem (1)
		61760 Flywheel	729	221907	Clip—Wire
387	390818	Screw—Sem (1)	741	261195	Gear—Timing
423	93410	Screw—Sem (1)	757	212359	Link—Counterweight
455	222561	Cup—Screen Mounting (1)	758	390172	Counterweight Assy.
468	222562	Screen—Flush Rotating (1)	759	298909	Pin—Counterweight
482	93621	Screw—Sem (1)	761	93874	Screw—Counterweight
516	260374	Spring—Connector	851	221798	Terminal—Ignition Cable
520	93722	Terminal—Spade	869	211661	Seat—Intake Valve (Standard)
528	390674	Pipe—Vent (1)	870	211661	Seat—Exhaust Valve (Standard)
534	93622	Screw—Air Cleaner	871	230655	Guide—Exhaust Valve
534A	93323	Screw—Air Cleaner	877	393814	Diode & Conn. Assy. (1)
535	270528	Element—Air Cleaner	878	393422	Alt. Harness Assy. (1)
536	391399	Cleaner Assembly—Air	887	391529	Stator Alternator DC (1)
		Uses: 280111 Support—Air Cleaner Element (Plastic)			

(1) Model 812 (BRIGG'S & STRATTON MODEL 191707-5650-01)

(2) Model 814 (BRIGG'S & STRATTON MODEL 191707-5651-01)

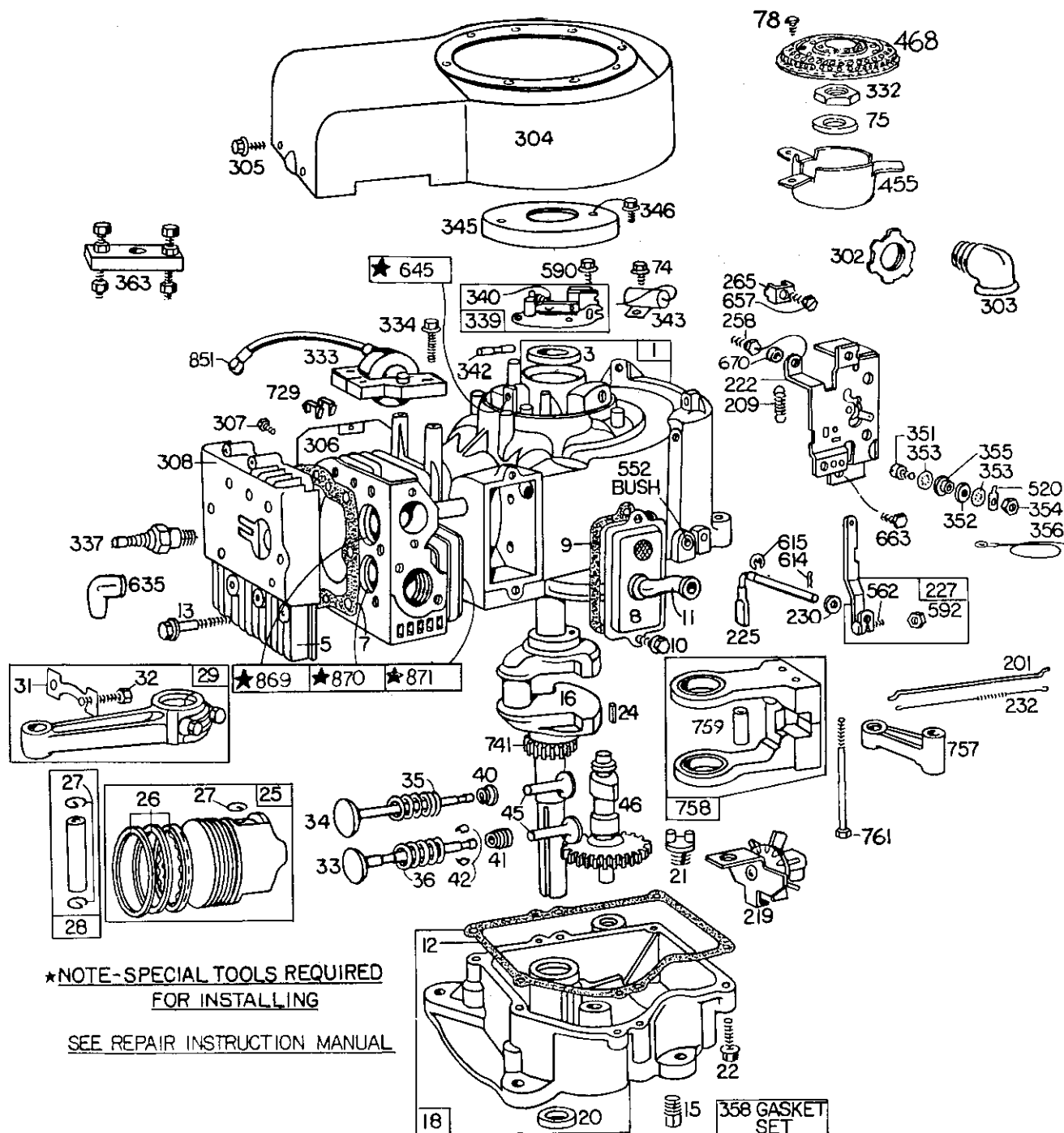


Figure 6. MODEL 1113 (BRIGG'S & STRATTON ENGINE ASSEMBLY 252707-0189-01)

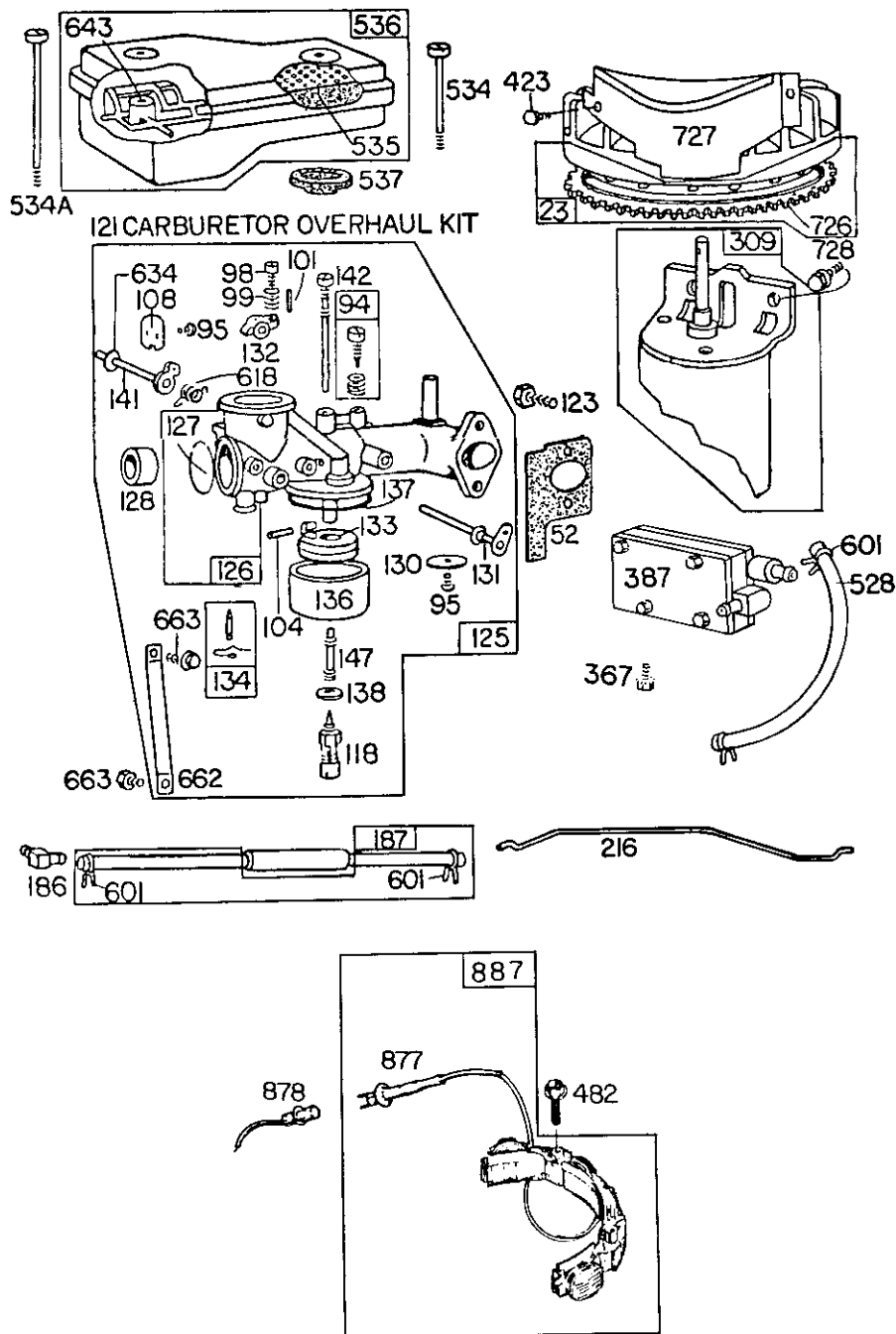


Figure 6A. MODEL 1113 (BRIGG'S & STRATTON ENGINE ASSEMBLY 252707-0189-01)

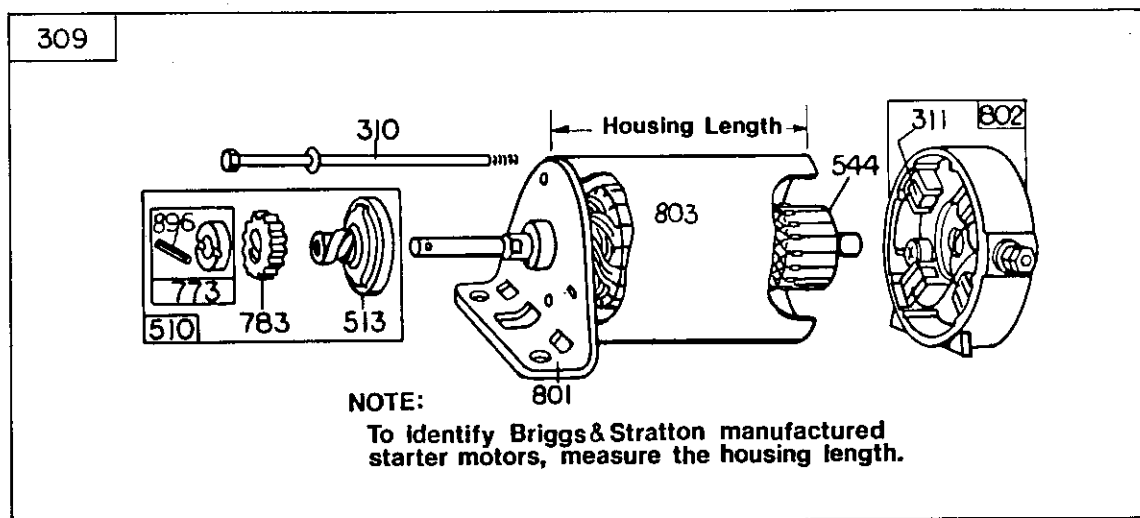


Figure 6B. MODEL 1113 (BRIGG'S & STRATTON ENGINE ASSEMBLY 252707-0189-01)

REF. NO.	PART NO.	DESCRIPTION
1	393409	Cylinder Assembly
3	391086	Seal—Oil
5	212300	Head—Cylinder
7	*271075	Gasket—Cylinder Head
8	392849	Breather Assembly
9	*27803	Gasket—Valve Cover
10	93394	Screw—Sem
11	280100	Tube—Breather
12	*270808	Gasket—Crankcase Cover—1/64" thick
	*270915	Gasket—Crankcase Cover—.005" thick
	*270916	Gasket—Crankcase Cover—.009" thick
13	93723	Screw—Cylinder Head (3" long)
15	91084	Plug—Oil Drain
16	391265	Crankshaft
18	391784	Sump—Oil
20	291675	Seal—Oil
21	66768	Plug—Oil Filter
22	93585	Screw—Sump Mounting Sem
23	391988	Flywheel and Ring Gear Ass.—Magneto
24	61760	Key—Flywheel

REF. NO.	PART NO.	DESCRIPTION
25	391285	Piston Assy.—Standard
	391287	Piston Assembly—.010" O.S.
	391288	Piston Assembly—.020" O.S.
	391289	Piston Assembly—.030" O.S.
PISTON RING SETS:		
26	391780	Ring Set—Piston—Std.
	391781	Ring Set—Piston—.010" O.S.
	391782	Ring Set—Piston—.020" O.S.
	391783	Ring Set—Piston—.030" O.S.
27	260924	Lock—Piston Pin
28	299691	Pin Assembly—Piston—Standard
	391286	Pin Assembly—Piston—.005" O.S.
29	391775	Rod Assy.—Connecting
31	222299	Lock—Conn. Rod Screw
32	92909	Screw—Conn. Rod
33	261185	Valve—Exhaust
34	261462	Valve—Intake

* Included in Gasket Set—
Part No. 393411.

BOLENS 11 HP TRACTOR

REF. NO.	PART NO.	DESCRIPTION
35	65906	Spring—Intake Valve
36	26828	Spring—Exhaust Valve
40	221596	Retainer—Intake Valve
41	292260	Rotocoil—Exhaust Valve
42	93630	Retainer—Exhaust Valve Rotocoil (2)
45	261183	Tappet—Valve
46	212296	Gear—Cam
52	*270872	Gasket—Carburetor Mounting
74	93042	Screw—Sem
75	220865	Washer—Spring
78	93808	Screw—Sem
94 †	292681	Valve Assembly—Carburetor Idle
95	93499	Screw Throttle and Choke Valve Mtg. Sem
98	91920	Screw—Machine, Fill. Hd. 8-32 x 5/8"
99	26157	Spring—Throttle Adjustment
101	93043	Pin—Throttle Sto]
104 †	230896	Pin—Float Hinge
108	222010	Valve Choke
118 †	391233	Valve—Needle
121	299852	Carburetor Overhaul Kit
123	93357	Screw—Carburetor Mtg.
125	394039	Carburetor Assembly (Choke-A-Matic)
126	394038	Body Assembly Carburetor
127 †	221997	Plug—Welch
128	211960	Venturi—Carburetor
130	222858	Valve—Throttle
131	391512	Shaft and Lever—Throttle
132	211712	Stop—Throttle
133	299707	Float—Carburetor
134 †	299096	Valve—Fuel Inlet
136 †	221995	Bowl—Float
137 †	270511	Gasket—Float Bowl
138 †	222014	Washer—Float Bowl
141	390684	Shaft and Lever Choke
142 †	299740	Nozzle—Carburetor

† Included in Carburetor Overhaul Kit—Part No. 299852.

* Included in Gasket Set Part No. 393411

REF. NO.	PART NO.	DESCRIPTION
147 †	230932	Screw—Nozzle
186	67218	Connector—Fuel Pipe
187	391498	Pipe—Fuel
201	261198	Link—Governor
209	261306	Spring—Governor
216	261274	Link—Choke
219	391764	Oil Slinger, Gov. Gear and Bracket Assembly
222	390662	Plate—Gov. Control
225	231058	Crank—Governor
227	391733	Lever Assy.—Governor
230	222450	Washer—Gov. Crank
232	261197	Spring—Governor Link
258	93686	Screw—Control Bracket Mounting
265	221535	Clamp—Casing
302	91310	Locknut—Muffler
303	91308	Elbow—Muffler—90°, Street
304	393997	Housing—Blower
305	93158	Screw—Blower Housing Mounting Sem
306	222744	Shield—Cylinder
307	93163	Screw—Cylinder Shield Mtg. Sem
308	222725	Cover—Cylinder Head
309		Motor—Starting (12 Volt)
		See Chart on Page 4 for Replacement Parts for Starting Motors.
332	92284	Nut—Hex.
333	298968	Armature Assembly
334	93381	Screw—Armature Mounting Sem
337	293918	Plug—Spark (Resistor Type)
	Note:	Spark Plugs use Ignition Cable Terminal No. 221798.
339	391284	Breaker Assy.—Ignition
340	26018	Spring—Breaker Arm
342	65704	Plunger—Breaker Point
343	391792	Condenser

REF. NO.	PART NO.	DESCRIPTION
345	222309	Cover—Breaker Point
346	93705	Screw—Sem
351	91920	Screw—Terminal
352	66068	Washer—Insulating
353	92791	Washer—Lock— Shakeproof
354	90576	Nut—Hex.—8-32 (2)
355	66554	Collar—Insulating
356	391602	Wire—Ground
358	393411	Gasket Set
363	19203	Puller—Flywheel
367	93380	Screw—Sem
387	390818	Pump—Impulse
423	93410	Screw—Sem
455	222561	Cup—Screen Mounting
468	222562	Screen—Flush Rotating
482	93621	Screw—Sem
520	93722	Terminal—Spade
528	390674	Pipe—Vent
534	93622	Screw—Air Cleaner
534A	93323	Screw—Air Cleaner
535	270843	Element—Air Cleaner
536	391786	Cleaner Assembly—Air
537	270853	Gasket—Air Cleaner
552	231055	Bushing—Gov. Crank
562	92613	Bolt—Governor Lever
590	93226	Screw—Breaker Adjusting Sem
592	231082	Nut—Hex., 10-24
601	93053	Clamp—Fuel Pipe
614	93306	Cotter—Hair Pin
615	93307	Retainer—E-Ring
618	261116	Spring—Choke Return
634	270382	Washer—Choke Shaft

REF. NO.	PART NO.	DESCRIPTION
635	66538	Elbow—Spark Plug
643	280118	Support—Air Cleaner Element
645	23513	Bushing—Plunger
662	222311	Bracket—Carburetor
663	93572	Screw
670	231039	Spacer—Control Bracket Mounting
726	392134	Gear—Ring (Includes mounting parts)
727	390233	Cover and Shield— Starter
728	93523	Screw—Sem
729	221907	Clip—Wire
741	261196	Gear—Timing
757	211675	Link—Counterweight
758	391373	Counterweight Assy.
759	298909	Pin—Counterweight (1)
761	93875	Screw—Counterweight (1)
851	221798	Terminal—Ignition Cable
869	261463	Seat—Intake Valve (Standard)
870	210940	Seat—Exhaust Valve (Standard)
871	230881	Guide—Exhaust Valve
877	393814	Diode and Connector Assy (DC)
878	393422	Alternator Harness Assy (DC)
887	391529	Stator Assembly— Alternator (DC)

BOLENS 8 HP & 11 HP TRACTORS

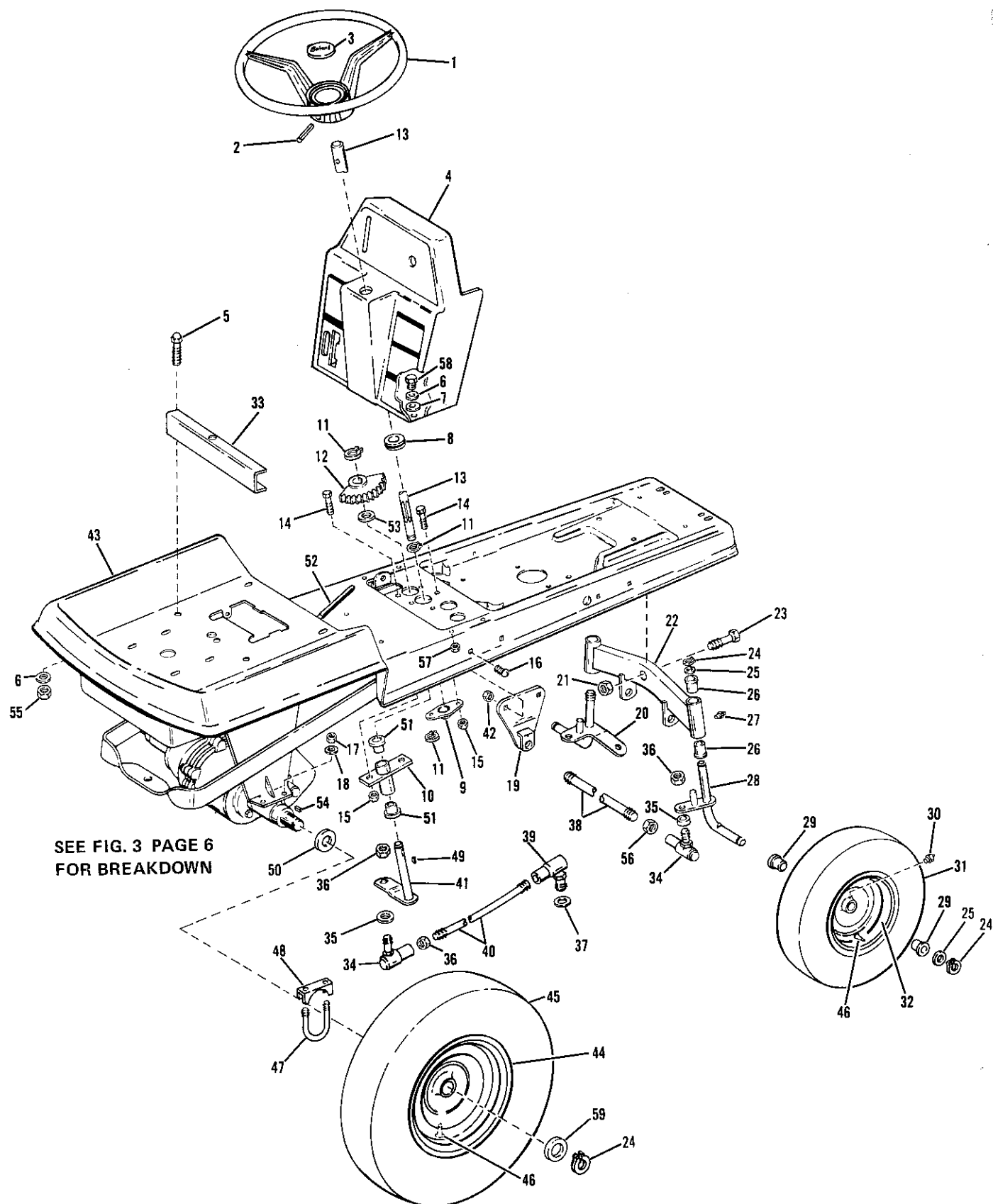


Figure 7 FRAME, STEERING AND AXLE ASSEMBLIES

MODELS 812 (LT8), 814 (LT8E) & 1113 (LT11)

REF. NO.	PART NO.	DESCRIPTION	NO. REQ'D.
1	1736907	Steering Wheel	1
2	• 1185279	Roll Pin, 1/4 x 2-1/4	1
3	1737071	Cap.	1
4	1737321	Instrument Panel.	1
5	• 1111599	Capscrew, 1/4-20 x 5/8 H.T.	3
6	• 1100241	Lockwasher, 1/4	7
7	• 1107381	Flat Washer, 1/4	4
8	1737322	Nylon Bearing.	1
9	1736440	Bearing	1
10	1736437	Steering Support.	1
11	1185649	Retaining Ring	3
12	1722270	Steering Gear	1
13	1737317	Steering Shaft.	1
14	• 1186329	Flange Screw, 5/16-18 x 3/4	4
15	• 1186391	Flange Nut, 1/4-20	4
16	• 1186098	Carriage Bolt, 5/16-18 x 3/4	4
17	• 1186230	Flange Nut, 5/16-18.	4
18	• 1100242	Lockwasher, 5/16	4
19	1738227	Rear Hitch.	2
20	1723100	Spindle, L.H. (812)	1
	1732749	Spindle, L.H. (814 & 1113).	1
21	• 1110112	Lock Nut, 5/8-11	1
22	1723048	Axle Assembly (Incl. Ref. Nos. 26 and 27) (812)	1
	1732723	Axle Assembly (Incl. Ref. Nos. 26 and 27) (814 & 1113)	1
23	• 1185921	Capscrew, 5/8-11 x 2	1
24	1185649	Retaining Ring	6
25	1700821	Flat Washer	AR
26	• 1185386	Flanged Bushing	4
27	1185976	Grease Fitting.	2
28	1723099	Spindle, R. H. (812).	1
	1732748	Spindle, R.H. (814 & 1113).	1
29	1720327	Bushing.	4
30	1185976	Grease Fitting.	2
31	1732469	Tire, 13 x 5.00-6.	2
	1707999	Tire Tube (Optional)	AR

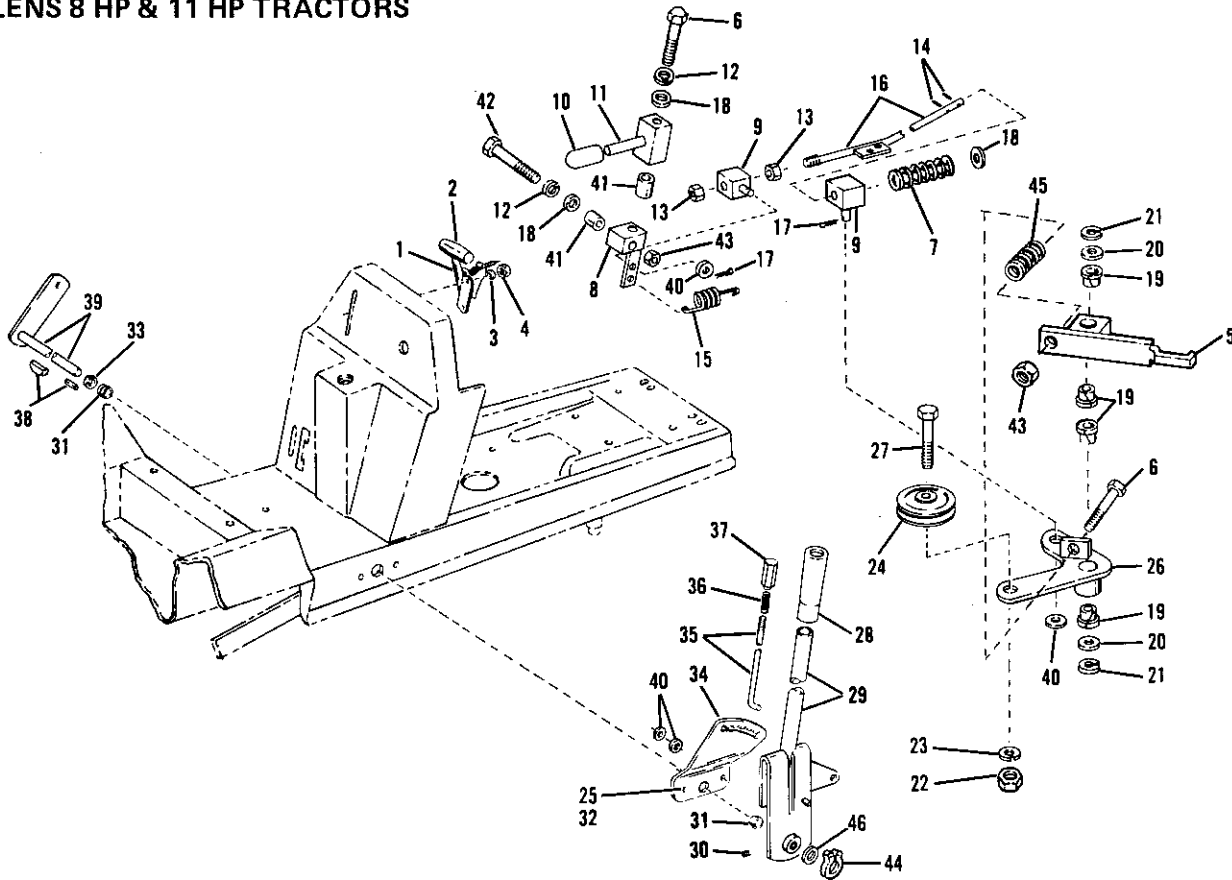
REF. NO.	PART NO.	DESCRIPTION	NO. REQ'D.
32	1721393	Wheel Assy. (Incl. Ref. No. 29)	2
33	1738567	Seat Support (1)	1
	1738437	Seat Support (2)	1
34	1713361	Ball Joint.	3
35	1715387	Spacer.	3
36	• 1110152	Jam Nut, 1/2-20	3
37	• 1100245	Lockwasher, 1/2	1
38	1713385	Tie Rod (812) (814 S/N 02)	1
	1723096	Tie Rod (814 S/N 01) (1113)	1
39	1716180	Ball Joint.	1
40	1737868	Steering Rod	1
41	1722186	Steering Arm	1
42	• 1186391	Flange Nut, 5/16-18.	4
43	1736988	Main Frame (1).	1
	1739155	Main Frame (2).	1
44	1737327	Wheel Only (812)	2
	1737070	Wheel Only (814 & 1113).	2
45	1732925	Tubeless Tire, 18 x 8.50 x 8 (814).	2
	1735720	Tube (Optional)	AR
	1737319	Tubeless Tire, 18 x 9.5-8 (1113).	2
46	1718086	Valve Stem.	4
47	1736160	"U" Bolt	2
48	1719694	Saddle Clamp	2
49	1185885	Woodruff Key.	1
50	1700821	Thrust Washer.	2
51	1185035	Flanged Bearing	2
52	1718534	Handle Grip	1
53	1700821	Flat Washer, 3/4	1
54	1104335	Square Ket, 3/16 x 2	2
55	• 1186229	Hex Nut, 1/4-20	3
56	• 1186247	Hex Jam Nut 1/2-20	4
57	• 1186229	Hex Nut 1/4-20.	4
58	• 1100805	Hex Screw 1/4-20 x 3/4	4
59	1700821	Flat Washer 3/4.	AR

• Common Hardware - Purchase Locally (Grade 5 where applicable.)

(1) Serial Number 0100101 thru 0199999

(2) Serial Number 0200101 thru 0299999

BOLENS 8 HP & 11 HP TRACTORS

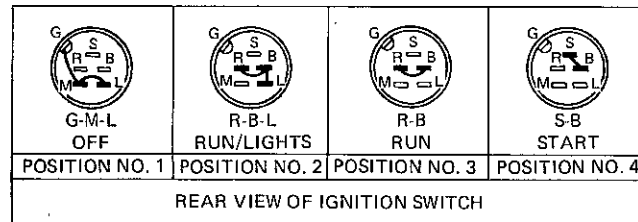
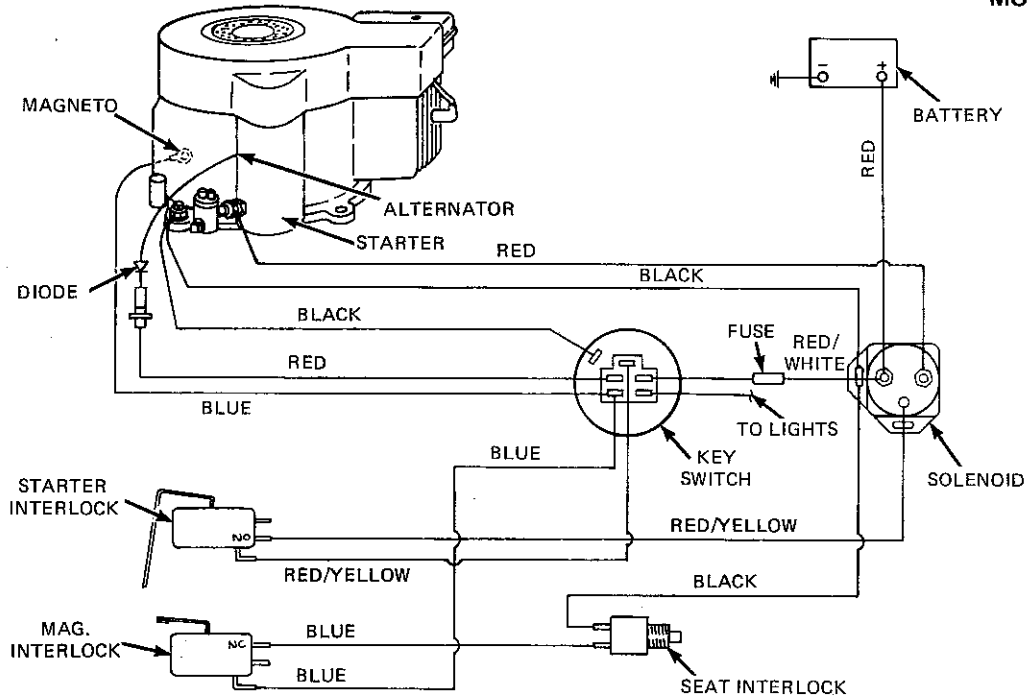


REF. NO.	PART NO.	DESCRIPTION	NO. REQ'D.	REF. NO.	PART NO.	DESCRIPTION	NO. REQ'D.
1	1722479	Throttle Control Assembly . . .	1	24	1713803	Idler Pulley	1
2	1719268	Knob Only.	1	25	1186393	Flange Nut, 3/8-16	2
3	• 1100240	Lockwasher, No. 10.	2	26	1736516	PTO Arm Assembly	1
4	• 1186208	Hex Nut, No. 10-32.	2	27	• 1100086	Capscrew, 3/8-16 x 1-3/4	1
5	1737343	Brake Arm Assy	1	28	1719267	Handle Grip	1
6	• 1100799	Capscrew, 5/16-18 x 1-1/2 . . .	2	29	1722295	Lift Lever Assembly (1)	1
7	1713781	Compression Spring	1		1740931	Lift Lever Assembly (2)	1
8	1732569	Clutch Arm Assy.	1	30	1185919	Set Screw, 5/16-18 (1)	2
9	1722250	Swivel.	2	31	1714299	Nylon Bushing	2
10	1715685	Handle Grip	1	32	1185346	Flange Screw, 3/8016 x 7/8. . .	2
11	1732566	Clutch Handle Assy	1	33	1722957	Spacer.	1
12	• 1100242	Lockwasher, 5/16	2	34	1720136	Quadrant.	1
13	• 1186230	Hex Nut, 5/16-18	2	35	1722298	Lift Lever Rod	1
14	1724885	Roll Pin, 3/22 x 3/4.	2	36	1713075	Spring.	1
15	1700401	Extension Spring.	1	37	1714644	Plunger	1
16	1737342	PTO Rod.	1	38	1104333	Square Key, 3/16 x 1.	1
17	• 1100346	Cotter Pin, 3/32 x 3/4	2	39	1723432	Lift Shaft (1)	1
18	• 1107382	Flat Washer, 5/16	3		1739171	Lift Shaft (2)	
19	1715538	Nyliner	4	40	• 1107383	Flat Washer, 3/8	4
20	1107385	Flat Washer, 1/2	2	41	1737331	Spacer.	2
21	1118804	Retaining Ring	2	42	1100779	Hex Screw, 5/16-18 x 1-3/4. . .	1
22	• 1186231	Hex Nut, 3/8-16	1	43	1110107	Lock Nut, 5/16-18.	2
23	• 1100243	Lockwasher, 3/8	1	44	1118808	Retaining Ring (2).	1
				45	1807317	Compression Spring.	1
				46	• 1107386	Flat Washer 5/8"	1

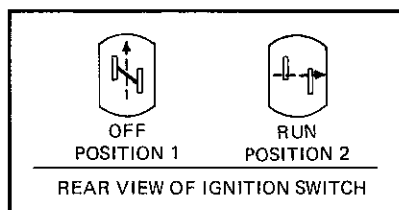
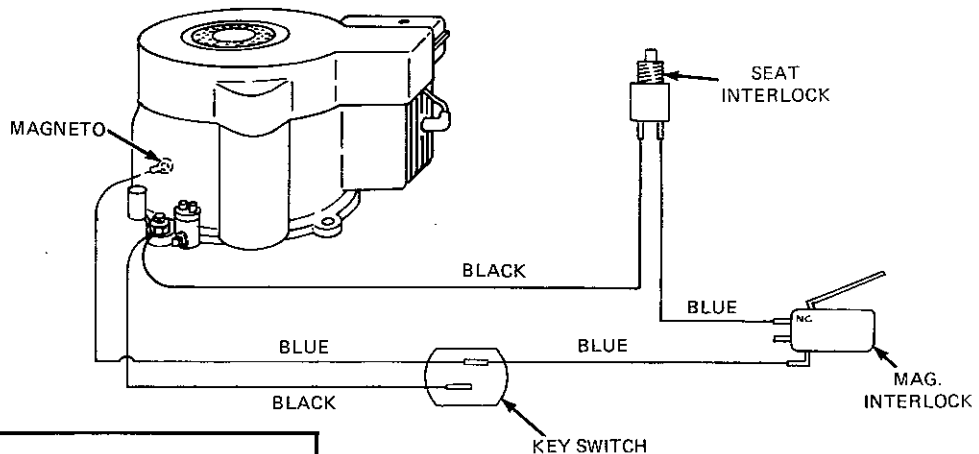
Figure 8 HAND CONTROLS AND LIFT ASSEMBLY

• Common Hardware - Purchase Locally (Grade 5 where applicable.)
 (1) Serial Number 0100101 thru 0199999
 (2) Serial Number 0200101 thru 0299999

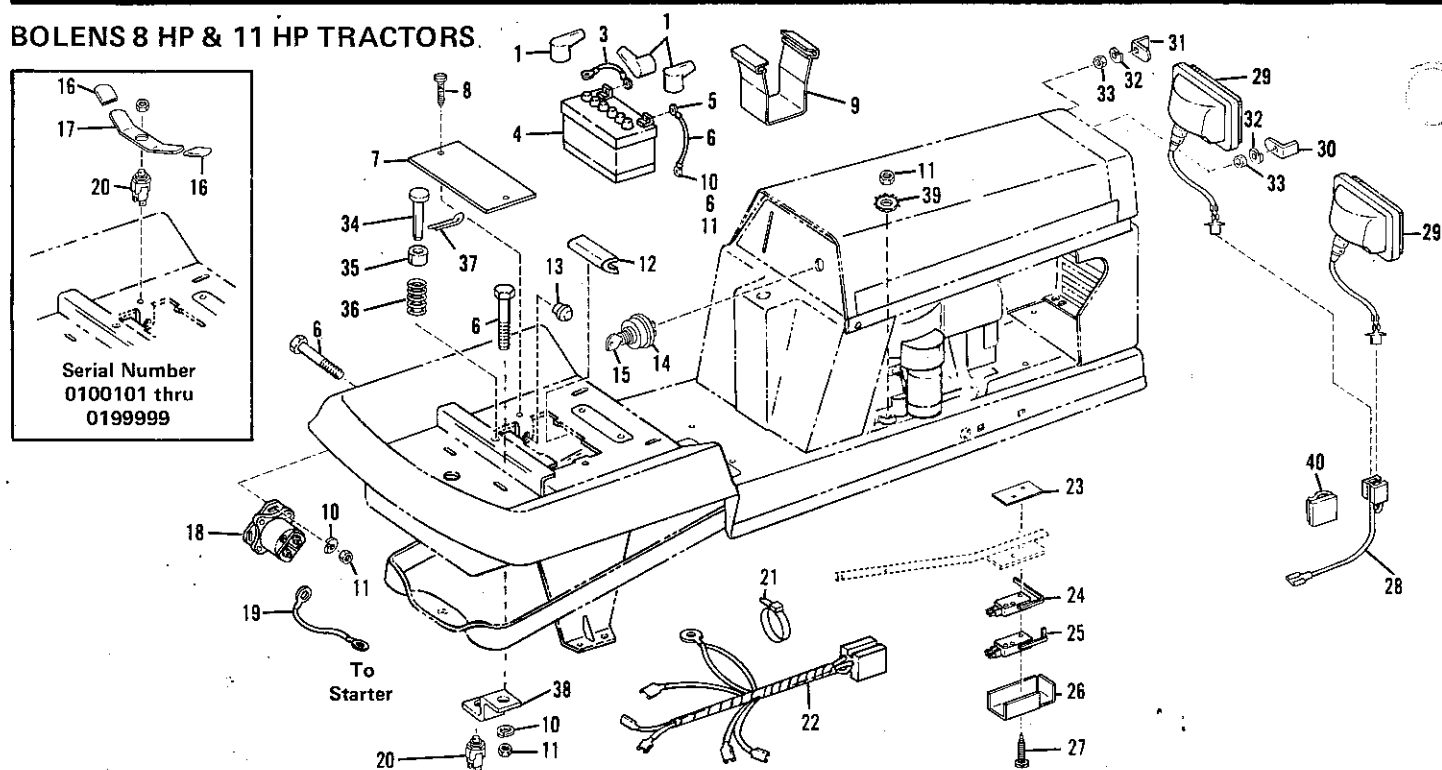
MODELS 814 & 1113



MODEL 812



BOLENS 8 HP & 11 HP TRACTORS



REF. NO.	PART NO.	DESCRIPTION	NO. REQ'D.
1	1715012	Boot Cable (814 & 1113)	3
2	1736689	Neg Battery Lead (814 & 1113)	1
3	1737405	Pos Battery Lead (814 & 1113)	1
4	1735253	Battery (814 & 1113)	1
5	• 1110106	Lock Nut, 1/4-20 (814 & 1113)	2
6	• 1111599	Hex Screw, 1/4 x 5/8 (814 & 1113)	5
7	1738003	Plate (812)	1
8	1185750	Self Drilling Screw, No. 10-24 x 5/8 (812)	2
9	1736973	Battery Strap (814 & 1113) . . .	1
10	• 1100241	Lockwasher, 1/4 (814 & 1113)	4
11	• 1186229	Hex Nut, 1/4-20 (814 & 1113)	4
12	1737454	Wear Strip (814 & 1113)	1
13	1724924	Wear Button (814 & 1113) . . .	2
14	1727321	Ignition Switch (812) Incl. Ref. No. 15	1
	1726169	Ignition Switch (814 & 1113) Incl. Ref. No. 15	1
15	1718266	Ignition Key Only	1
16	1733924	Grip (1)	2
17	1833923	Seat Switch Spring (1)	1
18	1729547	Solenoid (814 & 1113) (1) . . .	1
	1740056	Solenoid (814 & 1113) (2) . . .	1
19	1737407	Lead, Starter to Solenoid (814 & 1113)	1

REF. NO.	PART NO.	DESCRIPTION	NO. REQ'D.
20	1733925	Push Button Switch	1
21	1805345	Cable Tie	6
22	1737403	Wiring Harness (812)	1
	1737404	Wiring Harness (814 & (1113) (1)	1
	1740975	Wiring Harness (814 & (1113) (2)	1
23	1727777	Speed Nut	1
24	1737691	Interlock Switch	1
25	1738001	Switch Body (812)	1
	1732436	Interlock Switch (814 & 1113)	1
26	1737681	Switch Cover	1
27	1729478	Screw, No. 4-40 x 1-1/4	2
*28	1737552	Lead Assy (1113)	1
*29	1737418	Head Light (1113)	2
*30	1720219	Clip (1113)	2
*31	1722519	Clip (1113)	2
*32	• 1100240	Lock Washer, No. 10	4
*33	• 1186208	Hex Nut, No. 10-32	4
34	1741054	Clevis Pin (2)	1
35	1741055	Spacer (2)	1
36	1741053	Spring (2)	1
37	• 1187385	Cotter Pin 1/16 x 1/2 (2)	1
38	1739436	Switch Bracket (2)	1
39	1110645	Shakeproof Washer (2)	1
40	1724879	Clip (1113)	1

• Common Hardware - Purchase Locally (Grade 5 where applicable.)

*Parts in Model 18725 Optional Light Kit for Model 814 Tractor.

(1) Serial Number 0100101 thru 0199999

(2) Serial Number 0200101 thru 0299999

Figure 9 ELECTRICAL SYSTEM