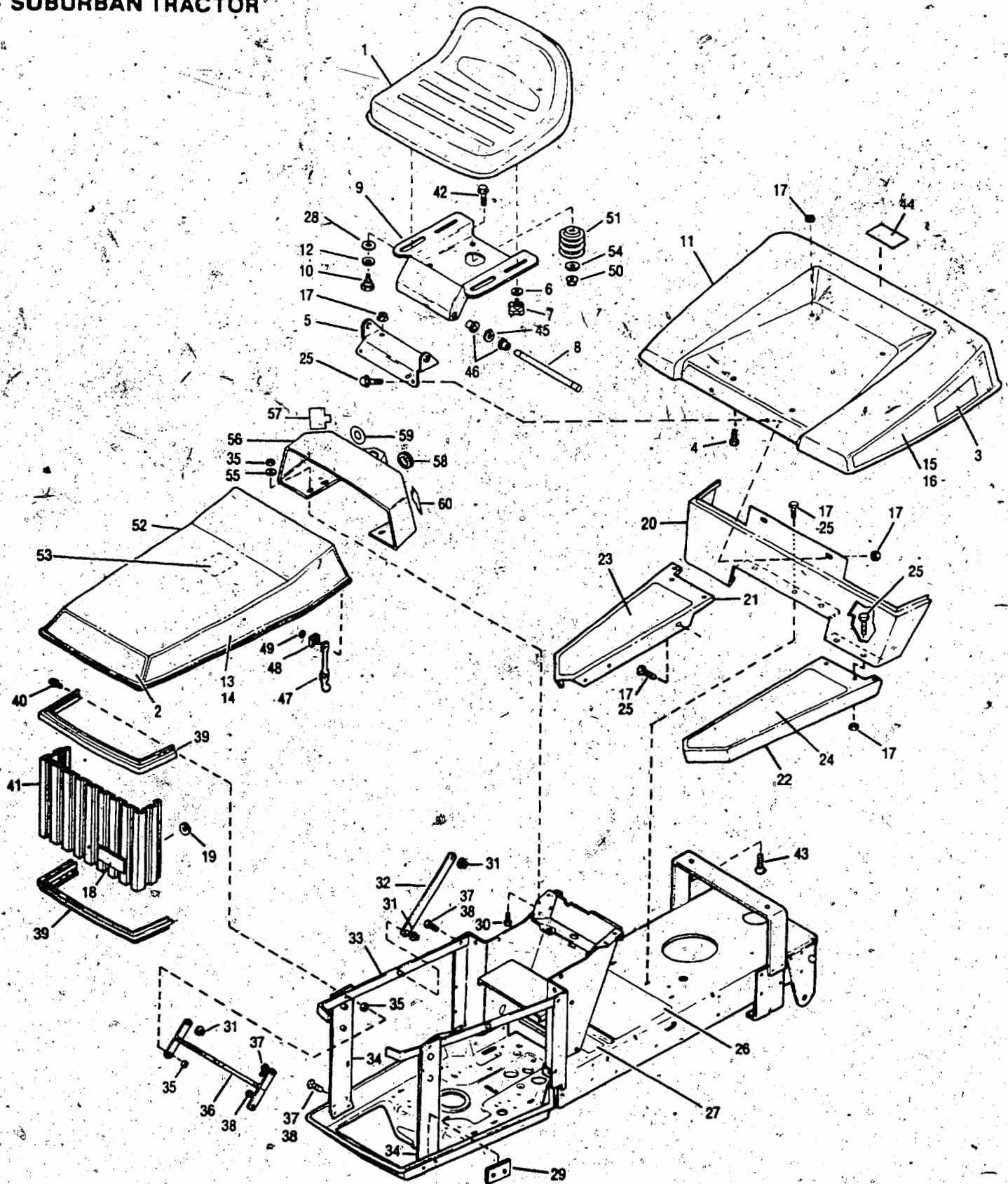


# SUBURBAN TRACTOR



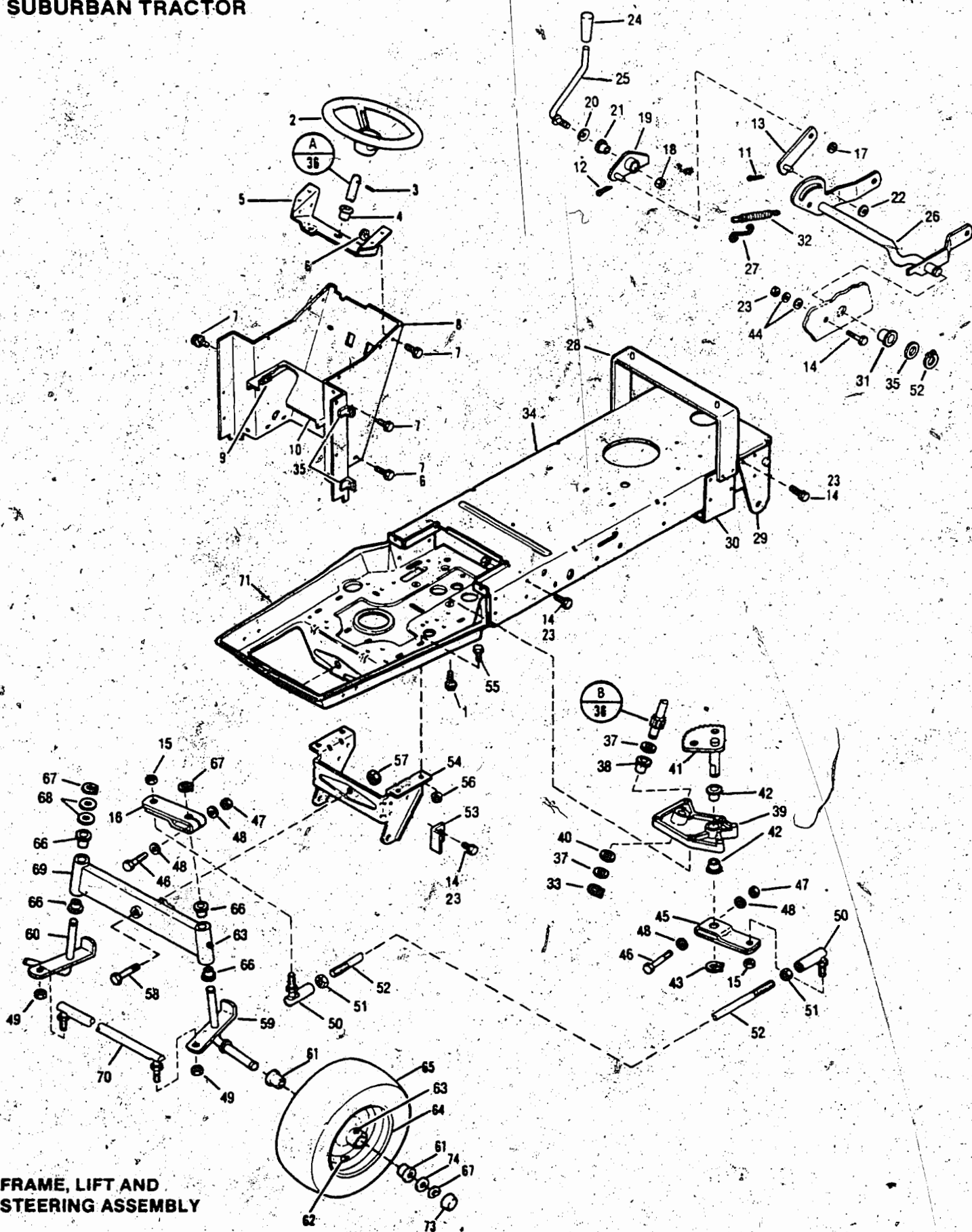
BODY WORK AND TRIM ASSEMBLY

REF. NO.	PART NO.	DESCRIPTION	NO. REQ'D
1	1752915	Seat .....	1
2	1756038	Decal, Hood .....	1
3	1756570	Decal, Model .....	2
4	1736098	Carr. Bolt 5/16-18 x 5/8 .....	2
5	1756466	Pivot Bracket .....	1
6	1107383	Flat Washer 3/8 .....	2
7	1734269	Knob .....	2
8	1755622	Rod .....	1
9	1755620	Seat Support Ass'y .....	1
10	1754125	Shoulder Bolt .....	2
11	1755848	Rear Fender .....	1
12	1705793	Washer, Nylon .....	2
13	1756037	Hood Decal R.H. ....	1
14	1756036	Hood Decal L.H. ....	1
15	1754624	Fender Decal R.H. ....	1
16	1756176	Fender Decal L.H. ....	1
17	1186391	Flange Nut 5/16-18 .....	15
18	1756043	Logo .....	1
19	1754126	Retainer .....	2
20	1743987	Running Board Support .....	1
21	1751805	R.H. Running Board .....	1
22	1751803	L.H. Running Board .....	1
23	1742665	R.H. Foot Pad .....	1
24	1755729	L.H. Foot Pad .....	1
25	1186330	FL. Lock Screw 5/16-18 x 7/8 .....	9
26	1755944	Center Foot Pad .....	1
27	1755942	Instruction Decal .....	1
28	1706782	Wave Washer .....	2
29	1754415	Spacer, Plate .....	2
30	1111599	Hex Hd. Screw 1/4-20 x 5/8 .....	4
31	1747836	Retaining Ring .....	6

REF. NO.	PART NO.	DESCRIPTION	NO. REQ'D
32	1742459	Hinge Link .....	2
33	1744062	Hinge Strap Assembly .....	2
34	1752914	Grille Support Assembly .....	2
35	1734398	Lock Nut 1/4-20 .....	8
36	1742458	Hinge Link .....	2
37	1186309	Flange Lock Screw 1/4-20 x 5/8 .....	12
38	1186389	Flange Lock Nut 1/4-20 .....	12
39	1742493	Grille Cap .....	2
40	1100069	Hex Hd. Screw 1/4-20 x 1 .....	2
41	1756591	Grille .....	1
42	1186347	Fl. Screw 3/8-16 x 1 .....	2
43	1736098	Carr. Bolt 5/16-18 x 5/8 .....	2
44	1754519	Fuel Decal .....	1
45	1185257	Retaining Ring .....	2
46	1755799	Bearing .....	4
47	1727127	Rubber Latch .....	2
48	1727126	Clip .....	2
49	1185985	Keps Nut #10-24 .....	2
50	1186393	Fl. Nut 3/8-16 .....	2
51	1755449	Comp. Spring .....	2
52	1744051	Hood Assembly .....	1
53	1755934	Service Instrument Decal .....	1
54	1701055	Flat Washer .....	2
55	1107381	Flat Washer 1/4 .....	4
56	1750686	Instrument Panel .....	1
57	1756593	Throttle Decal .....	1
58	1747144	Cap .....	2
59	1754521	Decal, Ignition .....	1
60	1756572	Choke Decal .....	1

• Common Hardware - Purchase Locally (Grade 5 where applicable).

# SUBURBAN TRACTOR



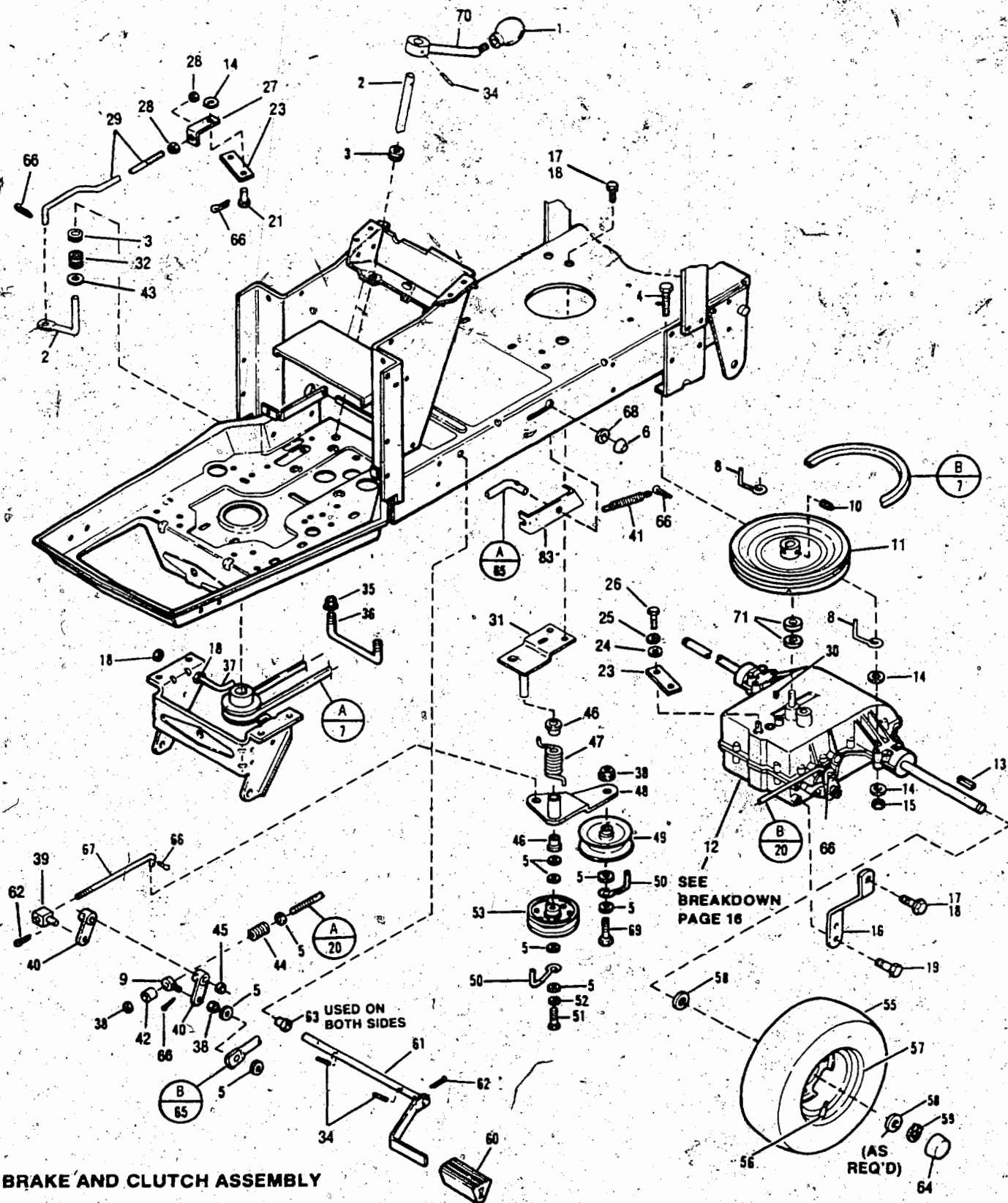
**FRAME, LIFT AND STEERING ASSEMBLY**

REF. NO.	PART NO.	DESCRIPTION	NO. REQ'D
1	1724491	Thd Form Screw 5/16-18 x 3/4	4
2	1727284	Steering Wheel	1
3	• 1185279	Roll Pin 1/4 x 2-1/4	1
4	1185632	Flange Bearing	1
5	1752363	Steering Shaft Support	1
6	• 1186389	Flange Nut 1/4-20	9
7	• 1186309	Flange Screw 1/4-20 x 5/8	13
8	1752881	Instr Panel Supp	1
9	1185456	U Type Speed Nut 1/4-20	4
10	1756073	Battery Support	1
11	• 1100350	Cotter Pin 1/8 x 1	1
12	• 1100359	Cotter Pin 1/8 x 5/8	1
13	1751794	Lift Link Ass'y	1
14	• 1186330	Fl. Lock Screw 5/16-18 x 7/8	31
15	1750957	Lock Nut 1/2-20	2
16	1750495	Steering Arm	1
17	• 1107383	Flat Washer 3/8	1
18	1750957	Lock Nut 1/2-20	1
19	1751791	Arm Assembly	1
20	1751797	Thrust Bearing	1
21	1751796	Bearing	1
22	• 1107385	Flat Washer 1/2	3
23	• 1186391	Flange Lock Nut 5/16-18	41
24	1756045	Handle	1
25	1756048	Lift Handle Ass'y	1
26	1751781	Lift Shaft Ass'y	1
27	1732198	Hook	1
28	1754944	Fender Support Assembly	1
29	1749801	Rear Panel Ass'y	1
30	1740984	Axle Support	1
31	1751798	Flange Bearing	2
32	1700401	Ext. Spring	1
33	1177567	Retaining Ring	1
34	1755847	Rear Frame	1
35	1705093	Flat Washer	5
36	1751284	Steering Shaft	1
37	1730375	Shim Washer	AR
38	1747303	Flange Bearing	1

REF. NO.	PART NO.	DESCRIPTION	NO. REQ'D
39	1750594	Steering Support Assembly	1
40	1715301	Thrust Washer	1
41	1750501	Sector Gear Assembly	1
42	1185386	Flange Bearing	2
43	1113527	Retaining Ring	1
44	• 1107382	Flat Washer 5/16	2
45	1750581	Steering Arm	1
46	• 1100049	Hex Head Screw 3/8-16 x 2-1/4	2
47	• 1733398	Hex Lock Nut 3/8-16	4
48	• 1708755	Flat Washer 3/8	4
49	• 1110150	Lock Nut 3/8-24	2
50	1716180	Ball Joint	2
51	• 1186247	Jam Hex Nut 1/2-20	2
52	1750499	Steering Rod	1
53	1751715	Bracket	2
54	1750811	Attachment Bracket	1
55	• 1186345	Flange Hex Screw 3/8-16 x 3/4	4
56	• 1186393	Flange Hex Nut 3/18-16	4
57	• 1110112	Lock Hex Nut 5/8-11	1
58	1744453	Hex Hd. Screw 5/8-11 x 2-1/4	1
59	1750486	L.H. Spindle Ass'y	1
60	1750490	R.H. Spindle Ass'y	1
61	1750341	Bushing	4
62	1718086	Valve Stem	2
63	1185976	Grease Fitting	4
64	1750924	Wheel (Inc. Ref. No. 61 & 63)	2
65	1750354	Tire 15 x 6.00-6	2
66	1742133	Flange Bearing	4
67	1185388	Retaining Ring	4
68	1701447	Washer	A/R
69	1750494	Front Axle Ass'y	1
70	1750841	Tire Rod	1
71	1742343	Front Frame	1
72	1177567	Retaining Ring	2
73	1744444	Wheel Cap	2
74	1185830	Special Washer	A/R

• Common Hardware - Purchase Locally (Grade 5 where applicable).

# SUBURBAN TRACTOR



**BRAKE AND CLUTCH ASSEMBLY**

REF. NO.	PART NO.	DESCRIPTION	NO. REQ'D
1	1744269	Knob	1
2	1752864	Shift Lever	1
3	1716295	Nylon Bushing	2
4	• 1111609	Hex Hd. Screw 5/16-18 x 2-3/4	4
5	• 1107383	Flat Washer 3/8	9
6	1747186	Push On Cap	1
7	1747188	V-Belt (96.88)	1
8	1752798	Belt Guide	2
9	1749904	Eye Bolt	1
10	1185596	Set Screw	2
11	1743640	Transmission Sheave	1
12		5-Speed Transmission	1
13	1104335	Sq. Key 3/16 x 2	2
14	• 1100255	Flat Washer 5/16	9
15	• 1732499	Lock Nut 5/16-18	4
16	1742103	Transmission Support	1
17	• 1186330	Fl. Lock Screw 5/16-18 x 7/8	3
18	• 1186391	Flange Nut 5/16-18	7
19	1724491	Thd. Form Screw 5/16-18 x 3/4	2
20	1746943	Brake Rod	1
21	1743605	Clevis Pin	1
22	1750526	Torsion Spring	1
23	1743606	Transmission Arm	1
24	• 1107381	Flat Washer 1/4	1
25	• 1100241	Lock Washer 1/4	1
26	• 1111683	Hex Screw 1/4-28 x 1/2	1
27	1744263	Shift Link	1
28	• 1186396	Lock Nut 7/16-20	2
29	1744252	Shift Rod	1
30	1104436	Woodruff Key 3/16 x 3/4	1
31	1751808	Idler Support Assembly	1
32	1743696	Comp Spring	1
33	1750542	Shift Lever	1
34	1120210	Roll Pin 3/16 x 1.00	4
35	• 1186389	Flange Lock Nut 1/4-20	4

REF. NO.	PART NO.	DESCRIPTION	NO. REQ'D
36	1744320	Belt Guide	1
37	1743985	Belt Guide	2
38	• 1733398	Lock Nut 3/8-16	3
39	1748491	Pivot	1
40	1751880	Arm Assembly	2
42	1713783	Spacer	1
43	• 1107385	Flat Washer 1/2	1
44	1728908	Compression Spring	1
45	• 1107387	Flat Washer 5/8	2
46	1715538	Nylon Bushing	2
47	1751809	Torsion Spring	1
48	1746941	Idler Arm Assembly	1
49	1726660	Idler	1
50	1725555	Belt Guide	2
51	• 1100049	Hex Hd. Screw 3/8-16 x 2-1/4	4
52	• 1100243	Lock Washer 3/8	1
53	1756151	Idler	1
54	• 1107382	Flat Washer 5/16	1
55	1750352	Tire 20 x 8.00-10	2
56	1718086	Valve Stem	2
57	1750351	Wheel Disc	2
58	1747998	Washer 3/4	A/R
59	1185388	Retaining Ring	2
60	1728694	Foot Rest	1
61	1756049	Brake Pedal Assembly	1
62	• 1100350	Cotter Pin 1/8 x 1	3
63	1714233	Nylon Bushing	2
64	1747873	Wheel Cap	2
65	1751063	Brake Lock Rod	1
66	• 1100359	Cotter pin 1/8 x 5/8	6
67	1746942	Clutch Rod	1
68	• 1100256	Washer, Flat 3/8	2
69	• 1100086	Screw Hex Hd 3/8-16 x 1-3/4	1
70	1756046	Lever Assembly	1
71	1705092	Flat Washer	2

• Common Hardware - Purchase Locally

\* Order parts from your local Tecumseh Power Products Engine Dealer.



This technical drawing is an exploded view of a mechanical assembly, likely a piece of industrial equipment. The central component is a large, rectangular metal frame (part 4) with a circular opening on its right side. Various other parts are shown in their relative positions around this frame, indicated by dashed lines showing their assembly paths. The parts are numbered as follows:

- 1:** A U-shaped bracket or handle at the top right.
- 2:** A small circular component, possibly a cap or plug.
- 3:** A complex, cast-like component on the right side.
- 4:** The main rectangular metal frame.
- 5:** Small circular fasteners or pins.
- 6:** A small cylindrical component.
- 7:** A small circular component.
- 8:** A small pin or screw.
- 9:** A small cylindrical component.
- 10:** A small circular component.
- 11:** A small circular component.
- 12:** A small pin or screw.
- 13:** A small circular component.
- 14:** A small circular component.
- 15:** A small circular component.
- 16:** A small pin or screw.
- 17:** A small circular component.
- 18:** A small circular component.
- 19:** A complex component with a circular top surface, possibly a motor or actuator.
- 20:** A small circular component.
- 21:** A small circular component.
- 22:** A small circular component.
- 23:** A small circular component.
- 24:** A small circular component.
- 25:** A small L-shaped bracket.
- 26:** A small circular component.
- 27:** A small circular component.
- 28:** A small circular component.
- 29:** A small cylindrical component.
- 30:** A small circular component.
- 31:** A small circular component.
- 32:** A small circular component.
- 33:** A small circular component.
- 34:** A small circular component.
- 35:** A small circular component.

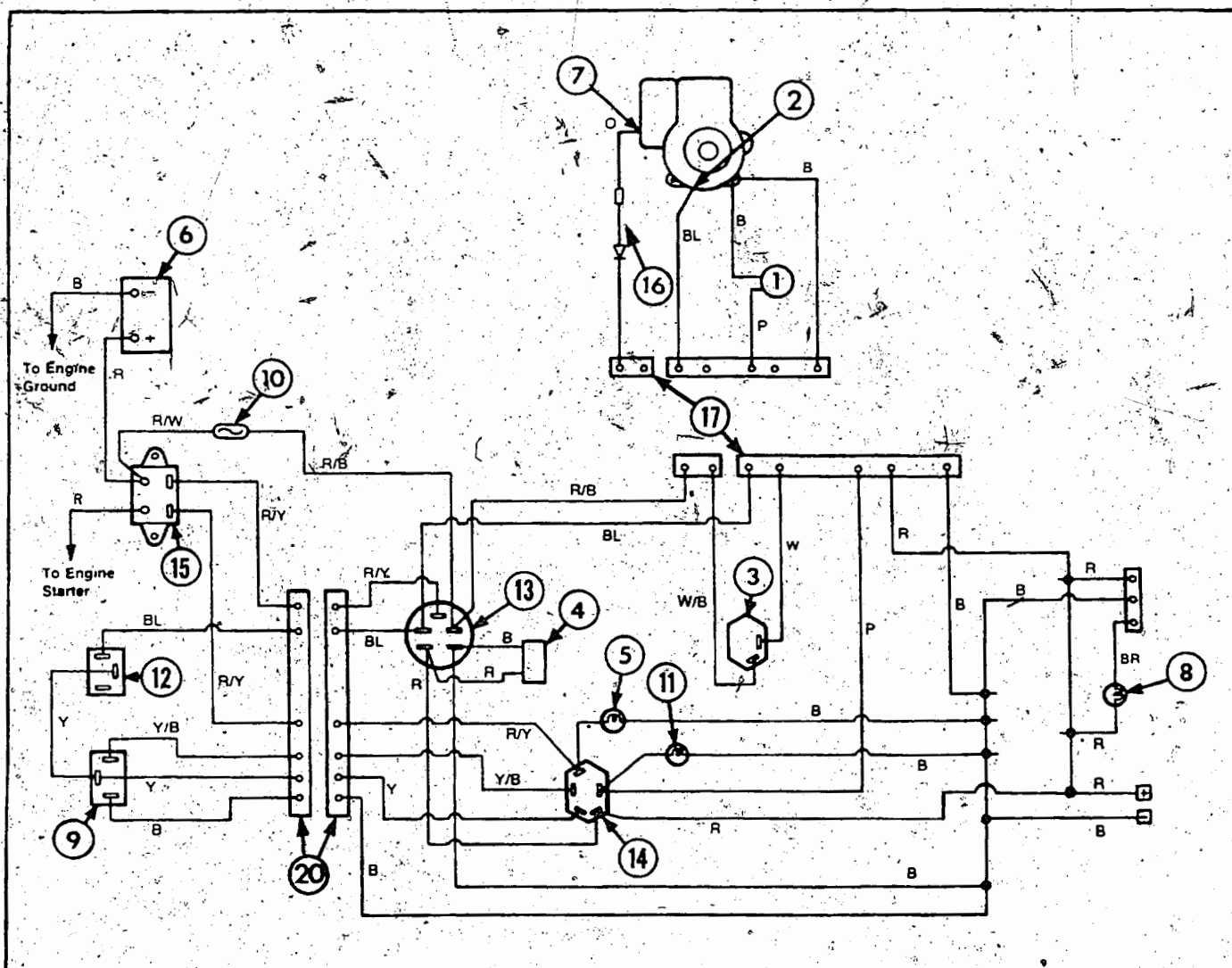
REF. NO.	PART NO.	DESCRIPTION	NO. REQ'D
1	1744390	Fuel Tank Pad .....	1
2	1755726	Fuel Tank Cap .....	1
3	1756460	Fuel Tank (Incl. Ref. 2, 6 & 7) ....	1
4	1752795	Fuel Line .....	1
5	1750687	Hose Clamp .....	2
6	1751477	Elbow .....	1
7	1738433	Bushing .....	1
8	1737118	Knob .....	1
9	1756592	Throttle Control .....	1
10	1754787	Clutch Retainer .....	1
11 •	1115815	Phil. Hd. Screw #10-24 x 5/8 .....	8
12 •	1185985	Keps Nut #10-24 .....	4
13	1748014	Grommet .....	1
14	1727491	Fuel Filter .....	1
15 •	1100255	Flat Washer 5/16 .....	4
16	1750962	Screw #10-24 x 5/8 .....	4
17 •	1186230	Hex Nut 5/16-18 .....	4
18 •	1100242	Lock Washer 5/16 .....	4

REF. NO.	PART NO.	DESCRIPTION	NO. REQ'D
19	*	Engine, B&S 10 HP Model 255707	1
20	1735531	Wire-Tie .....	2
21	1752883	Heat Shield .....	1
22	1747738	J-Clip .....	3
23	• 1110645	Lock Washer 5/16 (L.H. Rear) ....	1
24	1744454	Hex Hd. Screw 7/16-20 x 3 .....	1
25	1756566	Heat Shield .....	1
26	1105029	Elbow, 90° .....	1
27	• 1100244	Lock Washer 7/16 .....	1
28	1744455	Special Washer .....	1
29	1756571	Muffler .....	1
30	1185986	Speed Nut #10-24 .....	8
31	1747148	Sheave .....	1
32	1755341	Electric Clutch .....	1
33	• 1111606	Screw, Hex Hd. 5/16-18 x 2 .....	1
34	• 1100799	Hex Hd. Screw 5/16-18 x 1-1/2	
35	1748146	Sq. Key 1/4 x 1-1/2 .....	

- **Common Hardware - Purchase Locally (Grade 5 where applicable).**

# WIRING DIAGRAM

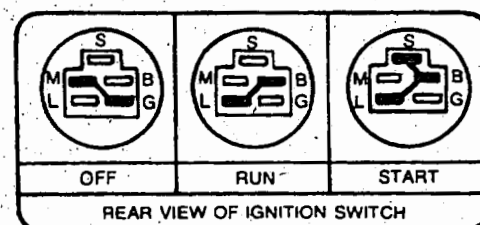
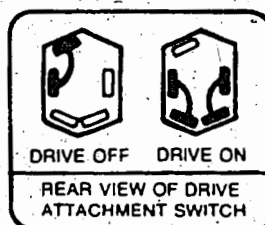
Model 3010G



1. Electric Clutch
2. Magneto
3. Light Switch (Optional)
4. Accessory Plug
5. Starter Light
6. Battery
7. Alternator
8. Battery Light
9. Brake Switch
10. Fuse 30A
11. PTO Light
12. Seat Interlock Switch
13. Ignition Switch
14. PTO Switch
15. Solenoid
16. Diode Assembly
17. Harness Connector

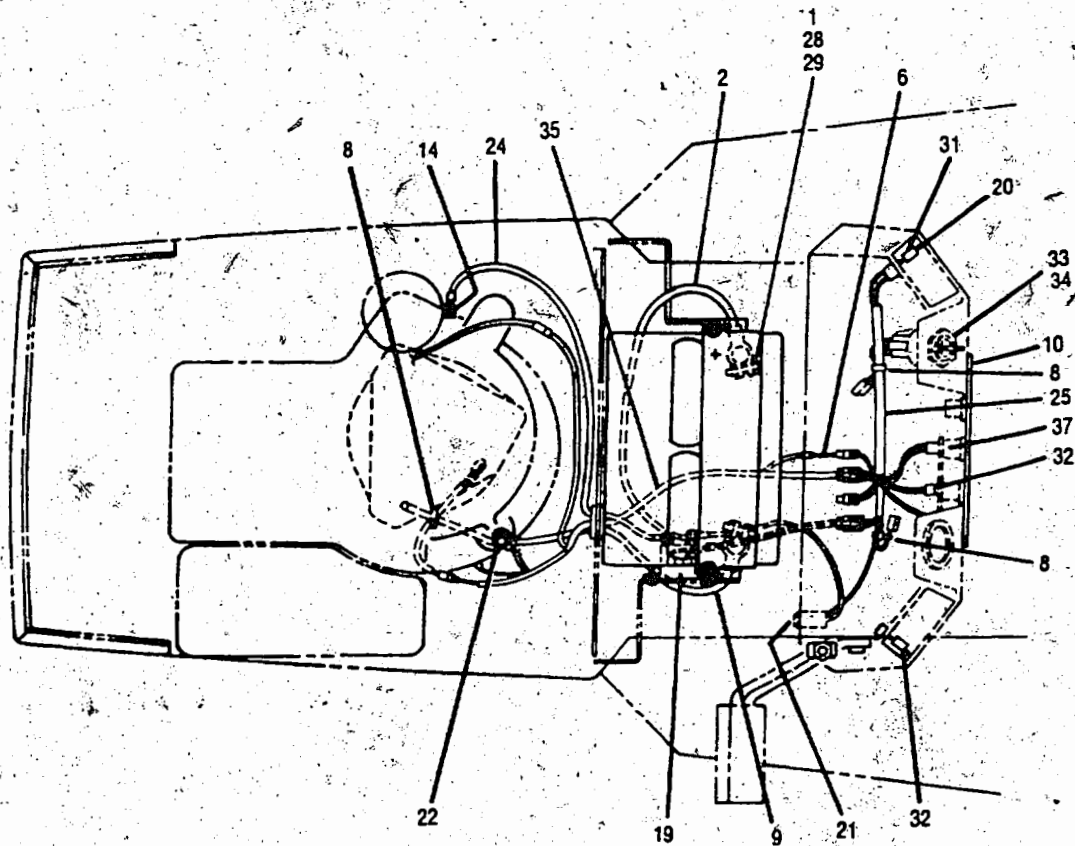
## WIRE COLOR CODE

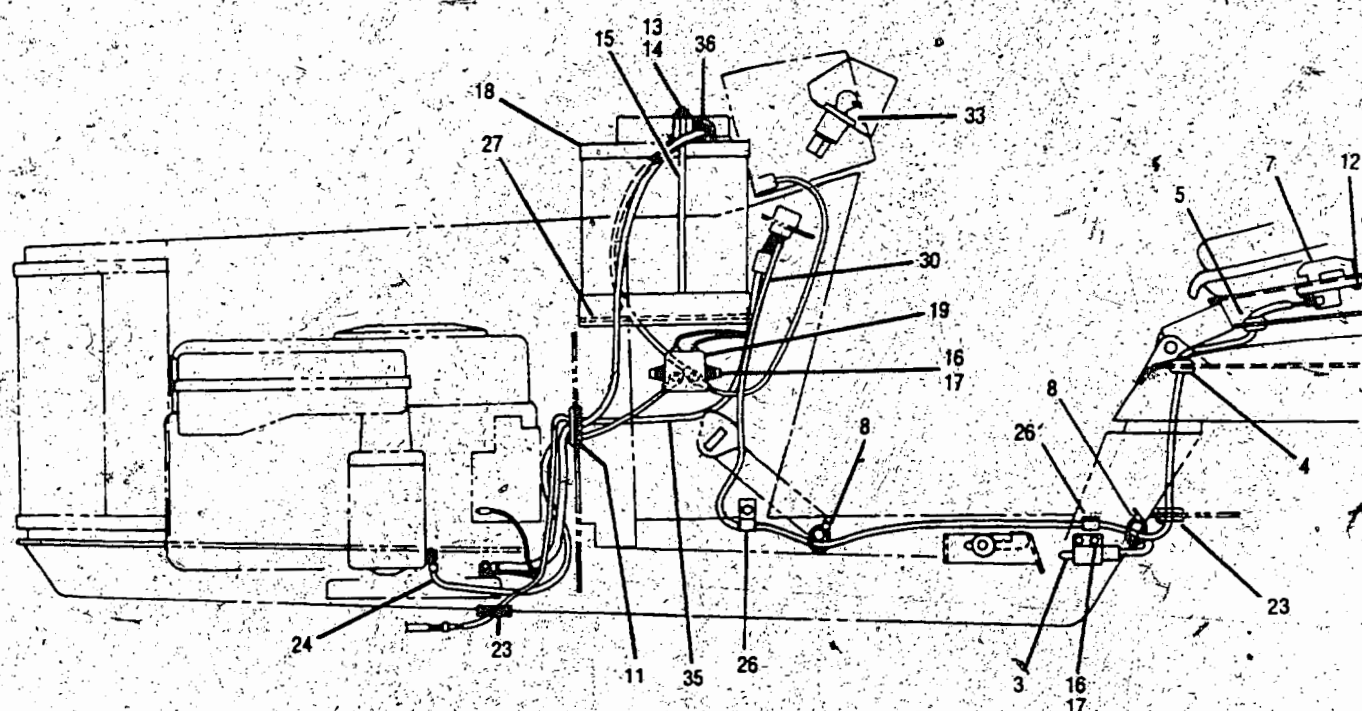
R-RED	R/W-RED/WHITE
B-BLACK	Y/B-YELLOW/BLACK
W-WHITE	R/B-RED/BLACK
O-ORANGE	W/BL-WHITE/BLUE
Y-YELLOW	R/Y-RED/YELLOW
P-PURPLE	BR-BROWN
BL-BLUE	





# SUBURBAN TRACTOR



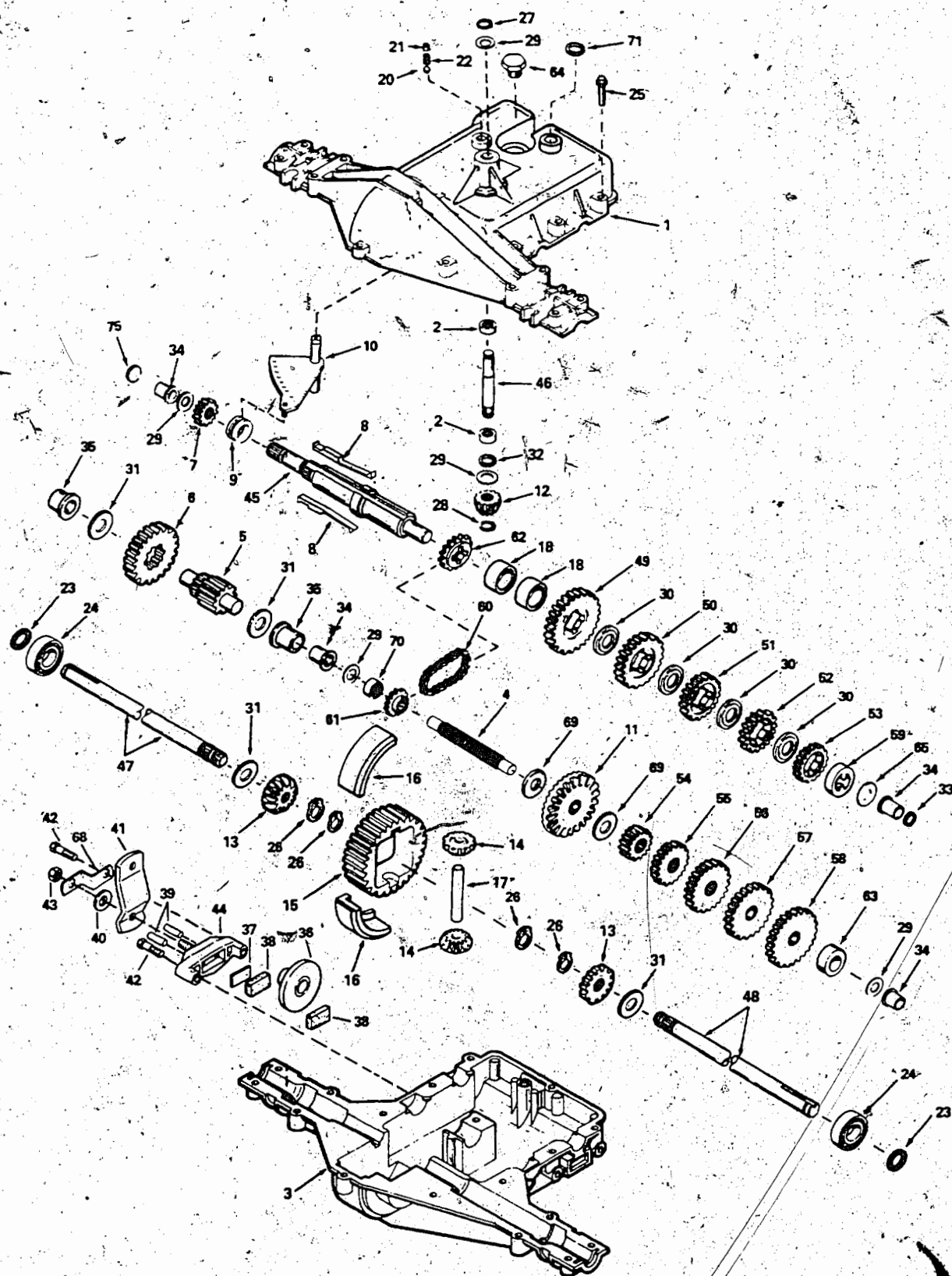


REF. NO.	PART NO.	DESCRIPTION	NO. REQ'D
1 •	1186229	Hex Nut 1/4-20.....	2
2	1756074	Battery Cable (Pos.) .....	1
3	1751328	Interlock Switch .....	1
4	1734934	Grommet.....	1
5	1755487	Grommet.....	1
6	1755738	Diode Ass'y .....	1
7	1752506	Switch .....	1
8	1735531	Wire Tie .....	3
9	1756075	Battery Cable (Neg.) .....	1
10	1756874	Lense .....	1
11	1752809	Grommet.....	1
12	1755349	Pan Hd. Screw 1/4-20 x 1/2 .....	2
13 •	1107381	Flat Washer 1/4 .....	2
14	1734398	Hex Lock Nut 1/4-20 .....	3
15	1752586	J-Bolt .....	2
16 •	1115815	Phil. Hd. Screw #10-24 x 5/8 .....	4
17	1185985	Nut #10-24 .....	4
18	1752840	Battery .....	1
19	1752137	Solenoid .....	1

REF. NO.	PART NO.	DESCRIPTION	NO. REQ'D
20	1750963	Screw 6-32 x 1/2 .....	4
21	1743516	Replacement Fuse, 30A .....	1
22 •	1186230	Hex Nut 5/16-18 .....	1
23	1748014	Grommet.....	1
24	1741506	Starter Cable .....	1
25	1752134	Console Wiring Harness.....	1
26	1747738	J-Clip.....	3
27	1756630	Rubber Pad .....	1
28 •	1100241	Lock Washer .....	2
29 •	1111599	Screw 1/4-20 x 5/8 .....	2
30	1756076	Interlock Harness .....	1
31	1754608	PTO Switch .....	1
32	1186020	Thd. Cut Screw 6-32 x 3/8 .....	1
33	1754250	Ignition Switch .....	1
34	1753986	Ignition Key .....	2
35	1752421	Harness, Engine .....	1
36	1755802	Cover .....	1
37	1751572	Bulb .....	3

• Common Hardware - Purchase Locally (Grade 5 where applicable).

# SUBURBAN TRACTOR



PEERLESS TRANSAXLE MODEL 920-011 (P/N 794455)

ORDER ALL PEERLESS PARTS FROM YOUR NEAREST  
POWER PRODUCTS TECUMSEH ENGINE DEALER

REF. NO.	PART NO.	DESCRIPTION
1	772094	Cover, Transaxle
2	780086	Bearing, Needle
3	1100821	Case, Transaxle
4	776260	Shaft, Counter
5	776219	Shaft & Pinion Ass'y, Output
6	778139	Gear, Output
7	778136	Gear, Spur (15 teeth)
8	792123A	Key
9	784216	Collar, Shifter
10	784337A	Rod & Fork Ass'y, Shift
11	778229	Gear, Bevel (42 teeth)
12	778113A	Bevel, Pinion, Input
13	778221	Gear, Bevel
14	778068	Gear, Bevel Pinion
15	778165	Gear, Ring
16	786101	Block, Bearing
17	786040	Pin, Drive
18	786121	Spacer
20	792077	Ball, Steel (5/16" dia.)
21	792078	Set Screw, 3/8-16 x 3/8
22	792079	Spring
23	788061	Ring, Felt
25	792073	Screw, Flanged Hex Hd. Thread Forming, 1/4-20 x 1-1/4
26	792125	Ring, Retainer (Pkg. of 2) (4 Required)
27	792035	Ring, Retainer
28	788040	Ring, Retainer
29	780072	Washer, Thrust
30	780108	Washer, Thrust
31	780001	Washer
32	792001	"O" Ring
33	788051	Seal, Square Cut
34	780105A	Bushing, Flanged
35	780118A	Bushing, Flanged
36	790003	Disk, Brake

REF. NO.	PART NO.	DESCRIPTION
37	790007	Plate, Brake Pad
38	790006	Pad, Brake
39	786026	Pin, Dowel
40	792076	Washer, Flat
41	790031	Lever, Brake
42	792073	Screw, Flanged Hex Hd. Thread Forming, 1/4-20 x 1-1/4
43	792075	Nut, Lock, 5/16-24
44	790025	Holder, Brake Pad
45	776267	Shaft, Brake
46	776226	Shaft, Input
47	774697	Axle (11-13/16" Long)
48	774738	Axle (16-7/16" Long)
49	778191	Gear, Spur (37 teeth)
50	778124A	Gear, Spur (30 teeth)
51	778123A	Gear, Spur (25 teeth)
52	778122A	Gear, Spur (22 teeth)
53	778162	Gear, Spur (19 teeth)
54	778230	Gear, Spur (12 teeth)
55	778126A	Gear, Spur (20 teeth)
56	778127A	Gear, Spur (25 teeth)
57	778128A	Gear, Spur (28 teeth)
58	778163	Gear, Spur (31 teeth)
59	786072	Spacer
60	786062A	Chain, Roller (No. 41 Chain, 22 Links)
61	786061	Sprocket (10 teeth)
62	786124	Sprocket (14 teeth)
63	786071	Spacer
64	792074	Plug, Hex Hd. 9/16-18 Thread
65	780109	Washer, Thrust
68	786086	Bracket, Brake Lever
69	780051	Washer, Thrust
70	786118	Spacer
71	788069	Seal, Square Cut
75	786116	Disk