

33 INCH TILLER ATTACHMENT

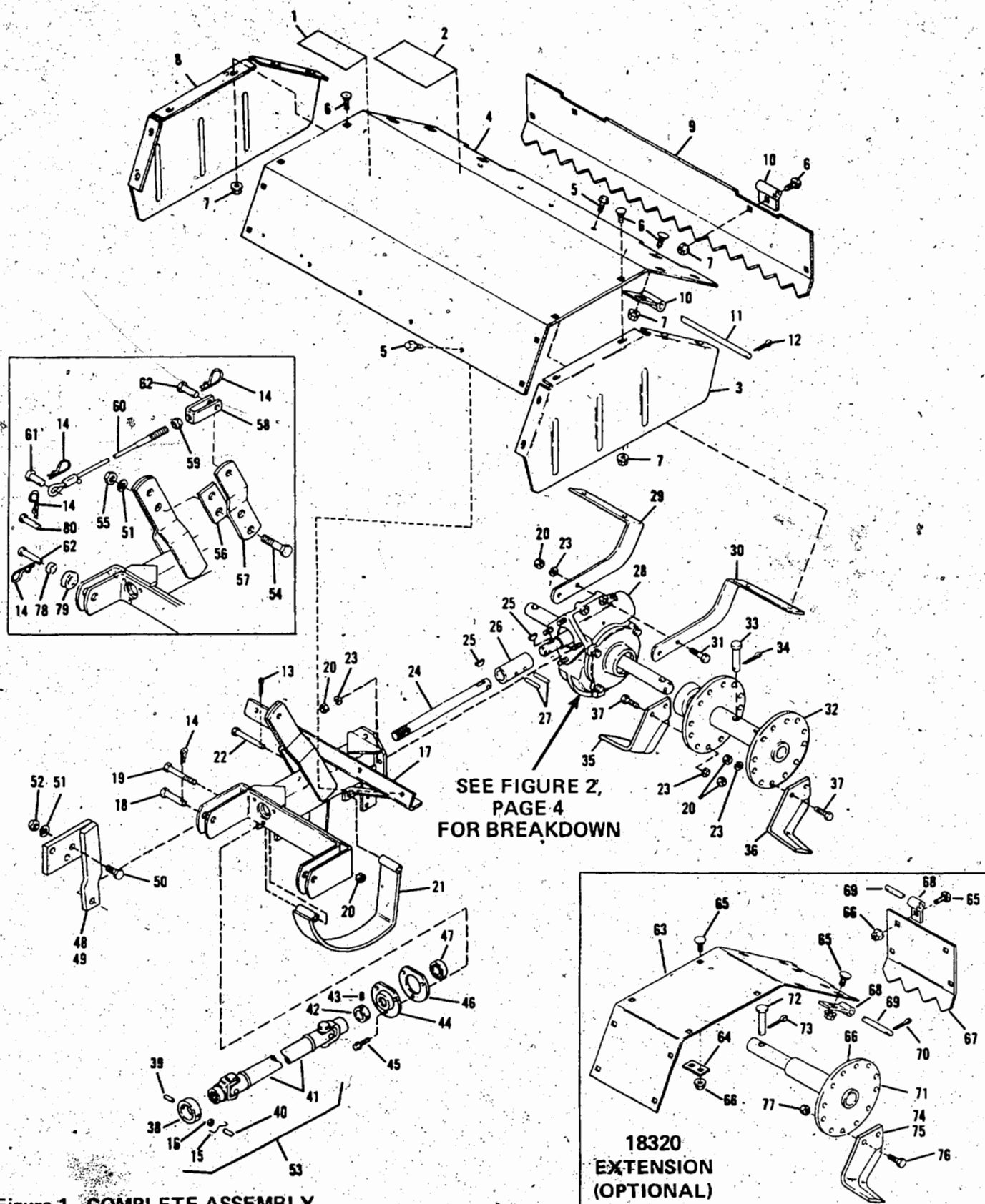


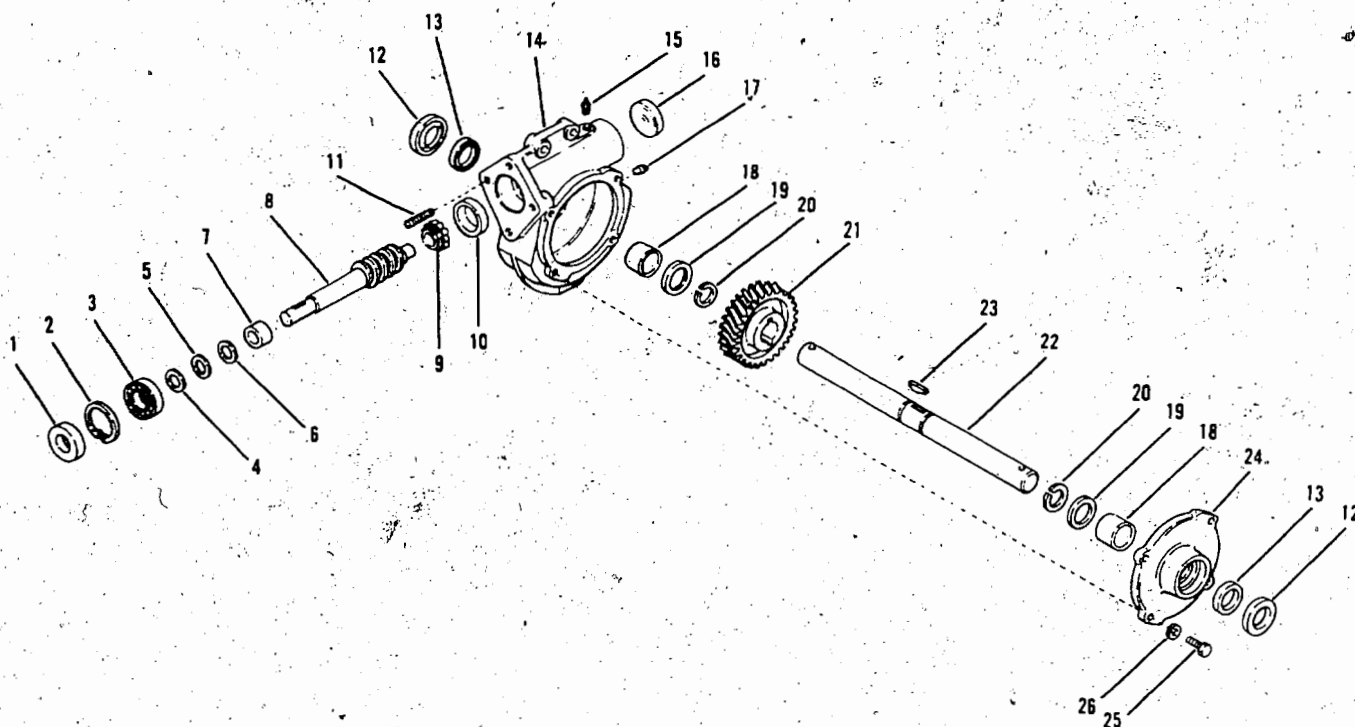
Figure 1. COMPLETE ASSEMBLY

REF. NO.	PART NO.	DESCRIPTION	NO. REQ'D.	REF. NO.	PART NO.	DESCRIPTION	NO. REQ'D.
1	1727451	Decal, Logo (1)(2)	1	41	1733910	Drive Shaft Assembly	1
	1736651	Decal, Logo (3)	1	42	1800417	Bearing, Collar	1
2	1725404	Decal, Caution	1	43	• 1103437	Set Screw, Hex. Soc. Hd. 1/4-20	2
3	1726850	Hood, Side LH	1	44	1734735	Bearing, Flange	1
4	1726854	Hood, Top	1	45	• 1724492	Screw, Fl. Lock 1/4-20 x 1/2 (Thd. Form.)	3
5	• 1724491	Screw, Fl. Lock 5/16-18 x 3/4 (Thd. Form.)	8	46	1733283	Spacer	1
6	• 1186469	Bolt-Short Neck Carriage 5/16-18 x 3/4	16	47	1733137	Bearing Ball (1)	1
7	• 1186391	Nut, Fl. Lock 5/16-18	16		1735372	Bearing Ball (2)(3)	1
8	1726851	Hood, Side RH	1	48	1733855	R.H. Hitch Arm (2)(3)	1
9	1723504	Board, Leveling	1	49	1733854	L.H. Hitch Arm (2)(3)	1
10	1718196	Hinge	4	50	• 1100055	Screw, Hex 1/2-13 x 1-1/4 (2)(3)	6
11	1723031	Pin, Hinge	1	51	• 1100245	Lock Washer 1/2 (2)(3)	8
12	• 1100346	Pin, Cotter 3/32 x 3/4	2	52	• 1186233	Nut, Hex 1/2-13 (2)(3)	6
13	• 1100349	Pin, Cotter 1/8 x 3/4	1	53	1733911	Drive Shaft Assy. (Includes Items 15, 16, 38, 39, 40, & 41)	1
14	1723478	Pin, Hitch	6	54	• 1100080	Hex Screw 1/2-13 x 2-3/4 (2)(3)	2
15	1723782	Spring, Return	1	55	• 1734514	Top Lock Nut 1/2-13 (2)(3)	2
16	1725334	Washer, Thrust	1	56	1734949	Lift Arm Spacer (2)(3)	4
17	1733884	Yoke Assembly (1)	1	57	1734557	Lift Arm Extension (2)(3)	1
	1734756	Yoke Assembly (2)(3)	1	58	1734192	Yoke, Cable (2)(3)	1
18	1713501	Pin, Clevis	2	59	• 1186231	Hex Nut 3/8-16 (2)(3)	1
19	• 1100770	Screw, Hex. Hd. Cap 3/8-16 x 2-3/4	1	60	1734193	Lift Cable (2)(3)	1
20	• 1733398	Nut, Top Lock 3/8-16	55	61	1706621	Clevis Pin (2)(3)	1
21	1732018	Shoe Assembly	1	62	1730851	Clevis Pin (2)(3)	2
22	1732441	Pin, Clevis 3/8 x 2-5/8	1	EXTENSION (OPTIONAL)			
23	• 1100243	Washer, Lock 3/8	54	63	1729544	Extension, Hood	1
24	1726864	Shaft	1	64	1718207	Connector, Ext.	7
25	1104436	Key, Woodruff 3/16 x 3/4 (1)	2	65	• 1186098	Bolt, Rd. Hd. Carriage 5/16-18 X 3/4	18
	1200033	Key, Hi-Pro (2)(3)	2	66	1186391	Nut, Flange Whiz Lock 5/16-18	18
26	1726865	Coupling	1	67	1718204	Board, Leveling Ext.	1
27	1185533	Pin, Drive 1/4 x 1-1/2	2	68	1718197	Hinge	4
28	1732401	Case Assembly, Gear	1	69	1718199	Pin, Hinge	1
29	1726855	Support, Hood (LH)	1	70	• 1100346	Pin, Cotter 3/32 x 3/4	2
30	1726856	Support, Hood (RH)	1	71	1732481	Extension, Hub Assembly	1
31	• 1100048	Screw, Hex. Hd. Cap 3/8-16 x 2	2	72	1732053	Pin, Clevis	1
32	1731843	Hub Assembly, Tine	2	73	• 1100350	Pin, Cotter 1/8 x 1	1
33	1732053	Pin, Clevis	2	74	1709388	Tine, L.H. Bend	3
34	• 1100350	Pin, Cotter 1/8 x 1	2	75	1709387	Tine, R.H. Bend	3
35	1709388	Tine, LH Bend	12	76	• 1100913	Screw, Hex. Hd. Cap 3/8-16 x 7/8	12
36	1709387	Tine, RH Bend	12	77	• 1110108	Nut, Hex. Lock 3/8-16	12
37	• 1100043	Screw, Hex. Hd. Cap 3/8-16 x 1-1/4	48	78	1734509	Spacer (3)	1
38	1723781	Collar, Locking	1	79	1734508	Roller (3)	1
39	1185916	Pin, Groove 3/16 x 3/8	1	80	1890227	Clevis Pin (3)	1
40	1118922	Pin, Groove 3/16 x 1/2	1	NI	1730354	Spray Paint, Black	
				NI	1736796	Spray Paint, Dark Green	

• Common Hardware - Purchase Locally - (Grade 5 where applicable)

- (1) Serial Number 0200101 thru 0399999
- (2) Serial Number 0400101 thru 0499999
- (3) Serial Number 0500101 and up

Figure 2.
GEAR CASE ASSEMBLY



REF. NO.	PART NO.	DESCRIPTION	NO. REQ'D.
1	1728829	Seal, Oil.	1
2	1728830	Ret. Ring, Int.	1
3	1100749	Ball Bearing	1
4	1701449	Shim.	AR
5	1718193	Shim.	AR
6	1800751	Shim.	AR
7	1728831	Spacer.	1
8	1726860	Shaft, Worm.	1
9	1185275	Cone, Tapered Roller Bearing	1
10	1185276	Cup, Tapered Roller Bearing	1
11	1733522	Stud, Threaded 3/8-16	4
12	1185630	Seal, Oil.	2
13	1185777	Seal, Oil.	2
14	1732400	Case, Gear	1

REF. NO.	PART NO.	DESCRIPTION	NO. REQ'D.
15	1721442	Valve, Pressure Relief	1
16	1731808	Plug, Expansion	1
17	1105620	Plug, 1/4-18 NPT.	1
18	1187206	Bearing, Needle.	2
19	1720529	Washer, Thrust	2
20	1118816	Ring, Retaining, Ext	2
21	1732396	Gear, Worm	1
22	1732394	Shaft, Tine.	1
23	1186063	Ret., Hi Pro	2
		(Type H-F-708).	
24	1732398	Cover, Gear Case	1
25	• 1100045	Capscrew - 5/16-18 x 3/4	4
26	• 1100242	Washer, Lock 5/16	4
NI	1722787	Lube, Worm Gear, H.D. 20 oz.	

• Common Hardware - Purchase Locally (Grade 5 where applicable).