



# CAES

The Connecticut Agricultural Experiment Station  
Putting Science to Work for Society since 1875

## The Connecticut AGRICULTURAL EXPERIMENT STATION

[Home](#)
[About Us](#)
[Programs & Services](#)
[Publications](#)
[Forms](#)
[Contact Us](#)

Dr. Theodore  
G. Andreadis  
Director



INVASIVE AQUATIC  
PLANT PROGRAM (IAPP)  
HOME

Program Information

Survey Results

Control Studies

Plant Descriptions

Publications

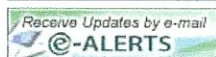
Herbarium

Links

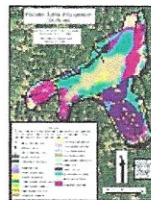
Contact Us

Site Map

MAIN MENU



## Hidden Lake, Higganum



### [2005 Aquatic Plant Survey Map of Hidden Lake](#)

(1.5 MB, .pdf format\*)

[Transect Data \(244 KB, .pdf format\\*\)](#) | [Water Data](#)

The 39 acre Hidden Lake is bordered by dense development of residential homes. A dam exists at the lake's west end. Access is limited to residents, and boats with motors are prohibited.

Aquatic plants were abundant at the time of our July 2005 survey. Submerged plants covered nearly the entire bottom of the shallow water body, and floating-leaved species were scattered through the middle of the lake, though they were most abundant at the ends of three sheltered coves. No invasive aquatic plant species were found.

*Nymphaea odorata* (white water lily) was the most abundant species in Hidden Lake, occurring almost continuously in the deeper water. The other floating-leaved species, *Brasenia schreberi* (watershield) and *Nuphar variegata* (yellow water lily) also were found throughout the lake but in much smaller patches.

A number of submerged plants grew under the floating-leaved species throughout the lake. The most abundant of these was *Vallisneria americana* (eel grass), which grew throughout most of the lake. *Najas flexilis* (slender naiad) and Charaphytes also were found all around the lake, but in much smaller quantities. *Potamogeton epihydrus* (ribbon-leaf pondweed), *Utricularia macrorhiza* (common bladderwort), and *Utricularia purpurea* (purple bladderwort) were found in small patches on all sides of the lake, but these species were mostly confined to the shallow water.

Other less abundant submerged plants were *Potamogeton bicipulatus* (snailseed pondweed) and *Potamogeton natans* (floating-leaf pondweed) found in the north, south and west edges of the lake and *Eleocharis acicularis* (needle spikerush) found in the south and west edges as well as one small patch in the middle of the lake with *Utricularia radiata* (floating bladderwort). *Pontederia cordata* (pickerelweed) and *Potamogeton pusillus* (small pondweed) were found on the north and west sides of the lake, and *Elatine minima* (small waterwort), *Gratiola aurea* (golden hedge-hyssop), *Isoetes engelmannii* (Appalachian quilwort) and *Utricularia intermedia* (flat-leaf bladderwort) were only found on the west side.

### [Find Common Plant Names](#)

(65 KB, .pdf format\*)

Species recorded in our 2005 survey of Hidden Lake. Click on plant to view herbarium mount. (invasive species in bold)

[Brasenia schreberi](#)

[Charaphyte](#)

[Elatine minima](#)

[Eleocharis acicularis](#)

[Gratiola aurea](#)

[Isoetes engelmannii](#)

[Najas flexilis](#)

[Nuphar variegata](#)

[Nymphaea odorata](#)



Surveyor	Depth	Substrate	Weather	Wind Direction	Transect	Points	Meters from Shore	<i>Vallisneria americana</i> *	<i>Eleocharis acicularis</i>	<i>Potamogeton pusillus</i>	<i>Najas flexilis</i>	<i>Potamogeton bicupulatus</i>	<i>Potamogeton epihydrus</i>	<i>Potamogeton natans</i>	<i>Utricularia purpurea</i>	<i>Utricularia radiata</i>	<i>Utricularia intermedia</i>	<i>Nuphar variegata</i>	<i>Brasenia schreberi</i>	<i>Nymphaea odorata</i>	Date	Latitude**	Longitude	
Robert Capers	0.25 Silt		sunny	West	1	0	0	0	0	0	0	0	0	3	0	0	4	2	0	3	7/11/2005	41.42039	-72.57409	
Robert Capers	0.5 Silt		sunny		1	2	5	0	0	2	4	0	0	4	0	0	0	0	3	3	3	7/11/2005	41.42037	-72.57404
Robert Capers	0.5 Silt		sunny		1	3	10	0	0	0	4	0	0	4	0	0	0	0	2	0	3	7/11/2005	41.42035	-72.57397
Robert Capers	0.9 Silt		sunny	North	1	4	20	3	0	0	2	0	0	3	0	0	4	4	4	0	3	7/11/2005	41.42037	-72.57384
Robert Capers	1 Silt		sunny	South	1	5	30	0	0	0	4	0	0	0	0	0	3	4	2	3	7/11/2005	41.42037	-72.57371	
Robert Capers	1 Silt		sunny	Northeast	1	6	40	0	0	0	2	0	0	0	3	0	0	4	0	3	7/11/2005	41.42037	-72.57360	
Robert Capers	1 Silt		sunny	North	1	7	50	0	0	0	4	0	0	0	2	0	0	0	3	3	7/11/2005	41.42041	-72.57350	
Robert Capers	1.5 Silt		sunny	North	1	8	60	0	0	0	2	0	0	0	2	0	0	3	0	3	7/11/2005	41.42043	-72.57338	
Robert Capers	1.7 Silt		sunny		1	9	70	0	0	0	2	0	0	0	3	0	0	3	2	2	7/11/2005	41.42048	-72.57326	
Robert Capers	1.7 Silt		sunny	South	1	10	80	0	0	0	0	0	0	0	4	0	0	2	0	3	7/11/2005	41.42049	-72.57314	
Robert Capers	0.3 Silt		sunny	West	2	1	0	3	0	0	0	0	0	3	0	0	0	0	0	0	7/11/2005	41.41830	-72.56762	
Robert Capers	1.7 Silt				1	2	0	3	0	0	4	0	0	0	0	0	0	3	0	3	7/11/2005	41.41835	-72.56763	

\*Plant abundance is on scale of 1 – 5: 1 = present but rare (1 plant), 2 = occasional (a few plants), 3 = common (more than a few plants), 4 = abundant, 5 = extremely abundant or dominant

\*\*Follow this link to convert decimal degrees to degrees minutes seconds  
<http://www.fcc.gov/mb/audio/bickel/DDDMSS-decimal.html>



Surveyor	Depth	Substrate	Weather	Wind Direction	Transect	Points	Meters from Shore	<i>Vallisneria americana</i> *	<i>Eleocharis acicularis</i>	<i>Potamogeton pusillus</i>	<i>Najas flexilis</i>	<i>Potamogeton bicupulatus</i>	<i>Potamogeton epihydrus</i>	<i>Potamogeton natans</i>	<i>Utricularia purpurea</i>	<i>Utricularia radiata</i>	<i>Utricularia intermedia</i>	<i>Nuphar variegata</i>	<i>Brasenia schreberi</i>	<i>Nymphaea odorata</i>	Date	Latitude**	Longitude	
Robert Capers	2 Silt		sunny	West	2	3	10	0	0	0	4	0	0	0	0	0	0	0	3	2	0	7/11/2005	41.41838	-72.56766
Robert Capers	1.8 Silt		sunny	Southwest	2	4	20	3	0	0	2	0	0	0	0	0	0	0	0	0	3	7/11/2005	41.41847	-72.56769
Robert Capers	1.8 Silt		sunny	West	2	5	30	3	0	0	3	0	0	0	0	0	0	4	2	0	7/11/2005	41.41854	-72.56777	
Robert Capers	1.8 Silt		sunny	West	2	6	40	0	0	0	3	0	0	2	2	2	0	0	0	4	7/11/2005	41.41863	-72.56782	
Robert Capers	1.8 Silt				2	7	50	0	0	0	4	0	3	0	3	0	0	2	0	4	7/11/2005	41.41870	-72.56787	
Robert Capers	2 Silt		windy		2	8	60	3	0	0	2	0	0	0	2	0	0	3	0	3	7/11/2005	41.41880	-72.56790	
Robert Capers	1.8 Silt		windy	West	2	9	70	3	0	0	2	0	0	0	0	0	0	3	3	3	7/11/2005	41.41887	-72.56795	
Robert Capers	1.8				1	10	80	3	0	0	4	0	0	0	0	0	0	4	3	0	7/11/2005	41.41896	-72.56791	
Robert Capers	0.25 Silt		sunny	South	3	1	0	0	3	0	0	0	0	3	2	2	3	5	2	2	7/11/2005	41.42377	-72.56781	
Robert Capers	0.3 Silt		sunny	North	3	2	5	0	0	0	3	0	3	4	3	2	2	0	4	0	7/11/2005	41.42372	-72.56781	
Robert Capers	0.4 Silt		sunny	North	3	3	10	0	0	0	4	2	4	0	2	3	0	0	0	0	7/11/2005	41.42368	-72.56778	
Robert Capers	0.6 Silt		sunny	Southeast	3	4	20	2	0	0	4	0	4	0	0	2	0	0	0	1	7/11/2005	41.42358	-72.56783	
Robert Capers	1 Silt		sunny	Northwest	1	5	30	0	0	0	4	0	3	0	0	3	0	0	0	0	7/11/2005	41.42349	-72.56784	
Robert Capers	1 Silt		sunny	Southwest	3	6	40	0	0	0	3	0	4	0	0	3	0	0	2	0	7/11/2005	41.42341	-72.56785	





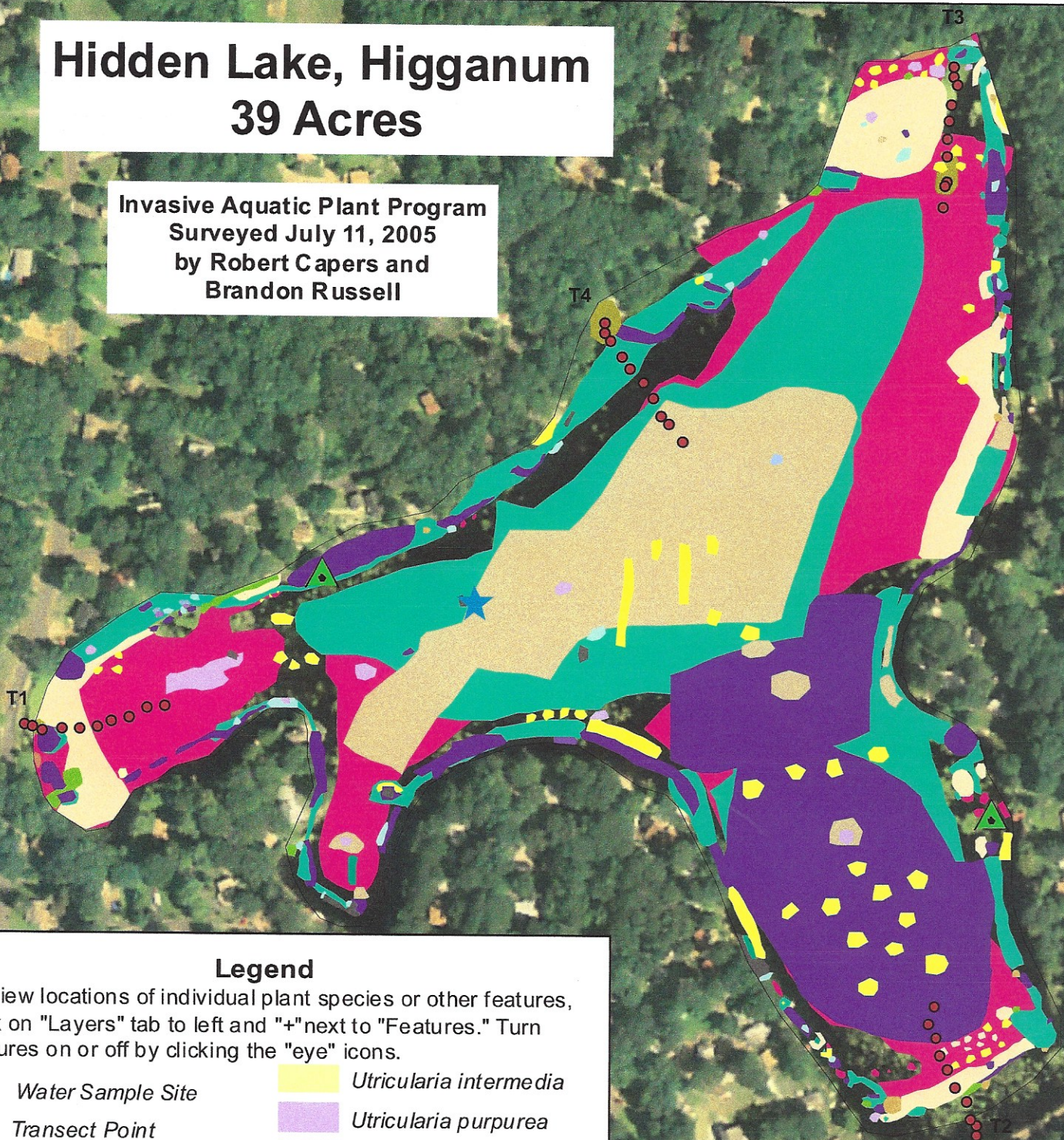
Surveyor	Depth	Substrate	Weather	Wind Direction	Transect	Points	Meters from Shore	<i>Vallisneria americana</i> *	<i>Eleocharis acicularis</i>	<i>Potamogeton pusillus</i>	<i>Najas flexilis</i>	<i>Potamogeton bicupulatus</i>	<i>Potamogeton epihydrus</i>	<i>Potamogeton natans</i>	<i>Utricularia purpurea</i>	<i>Utricularia radiata</i>	<i>Utricularia intermedia</i>	<i>Nuphar variegata</i>	<i>Brasenia schreberi</i>	<i>Nymphaea odorata</i>	Date	Latitude**	Longitude
Robert Capers	0	Silt	sunny	South	3	7	50	2	0	0	4	0	3	0	0	2	0	0	2	1	7/11/2005	41.42331	-72.56785
Robert Capers	1	Silt	sunny	Southwest	3	8	60	0	0	2	2	0	0	0	3	0	0	0	0	0	7/11/2005	41.42319	-72.56786
Robert Capers	1	Silt	sunny	Northeast	1	9	70	0	0	2	0	0	0	0	3	2	0	0	0	0	7/11/2005	41.42317	-72.56786
Robert Capers	1		sunny	East	3	10	80	2	0	2	0	0	3	0	0	2	0	0	4	3	7/11/2005	41.42305	-72.56788
Robert Capers	0.2	Sand	sunny		4	1	0	2	3	3	3	0	3	0	2	0	0	3	0	0	7/11/2005	41.42246	-72.57017
Robert Capers	0				4	2	5	3	0	3	4	0	0	0	0	2	0	0	0	0	7/11/2005	41.42240	-72.57017
Robert Capers	1.5	Sand	sunny		4	3	10	4	1	2	4	0	0	0	0	3	0	0	0	0	7/11/2005	41.42236	-72.57013
Robert Capers	1.5	Silt	sunny	South	4	4	0	4	0	0	4	0	3	0	0	2	0	0	0	0	7/11/2005	41.42228	-72.57005
Robert Capers	2	Silt	sunny	South	4	5	30	4	0	0	3	0	2	0	0	0	0	0	2	0	7/11/2005	41.42222	-72.56999
Robert Capers	2	Silt	sunny		4	6	40	3	0	0	2	0	0	0	0	0	0	0	1	0	7/11/2005	41.42215	-72.56991
Robert Capers	2	Sand	sunny	West	4	7	50	4	0	0	0	0	0	0	0	0	0	0	0	0	7/11/2005	41.42207	-72.56983
Robert Capers	2	Silt			1	8	60	0	0	0	0	0	0	0	4	2	0	0	0	0	7/11/2005	41.42198	-72.56978
Robert Capers	2	Silt			4	9	70	2	0	0	0	0	0	0	3	2	0	0	0	0	7/11/2005	41.42194	-72.56973
Robert Capers	2	Silt	sunny	West	4	10	80	3	0	0	2	0	0	0	2	0	0	0	1	0	7/11/2005	41.42185	-72.56963





# Hidden Lake, Higganum 39 Acres

Invasive Aquatic Plant Program  
Surveyed July 11, 2005  
by Robert Capers and  
Brandon Russell



## Legend

To view locations of individual plant species or other features, click on "Layers" tab to left and "+" next to "Features." Turn features on or off by clicking the "eye" icons.

- |              |                                |              |                               |
|--------------|--------------------------------|--------------|-------------------------------|
| ★            | Water Sample Site              | Yellow       | <i>Utricularia intermedia</i> |
| ●            | Transect Point                 | Purple       | <i>Utricularia purpurea</i>   |
| ▲            | Plant Collection Site          | Light Blue   | <i>Utricularia radiata</i>    |
| Dark Purple  | <i>Elatine minima</i>          | Brown        | <i>Utricularia vulgaris</i>   |
| Dark Grey    | <i>Eleocharis acicularis</i>   | Light Cyan   | <i>Potamogeton epihydrus</i>  |
| Light Blue   | <i>Gratiola aurea</i>          | Tan          | Charaphyte                    |
| Light Purple | <i>Isoetes engelmannii</i>     | Dark Purple  | <i>Najas flexilis</i>         |
| Yellow       | <i>Nuphar variegata</i>        | Teal         | <i>Vallisneria americana</i>  |
| Teal         | <i>Potamogeton bicupulatus</i> | Light Yellow | <i>Brasenia schreberi</i>     |
| Light Green  | <i>Potamogeton natans</i>      | Pink         | <i>Nymphaea odorata</i>       |
| Olive Green  | <i>Potamogeton pusillus</i>    |              |                               |
| Brown        | <i>Pontederia cordata</i>      |              |                               |

