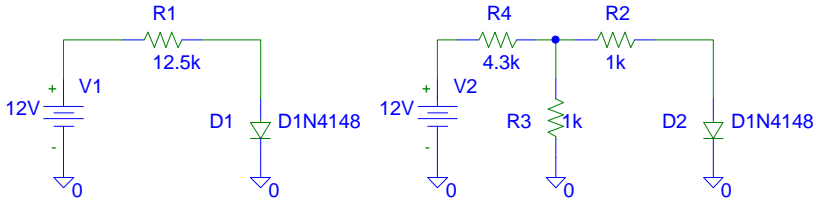
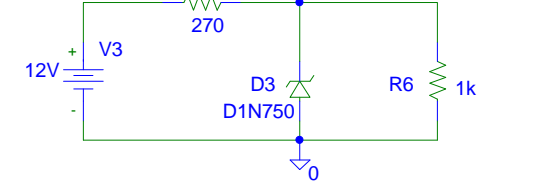


1. 12V DC source, R1=12.5k, D1=D1N4148. Calculate the current through the diode.



2. AC source: 220V RMS, 60Hz. R4=4.3k, R3=1k, R2=1k, D2=D1N4148. Calculate the average power dissipated in the diode. (Diode turn-on voltage = 0.6V)

3. 12V DC source, R5=270, D3=D1N750, R6=1k. Calculate the current through the diode.



4. 24V DC source, R8=1k, R9=47, D4=D1N750, D5=D1N4148, D6=D1N4148, D7=D1N750, R7=10k. Calculate the current through the diode D4.

